

GLOBAL X

by Mirae Asset

—

GLOBAL X ACTIVE CANADIAN BOND ETF (HAD:TSX)

ANNUAL REPORT | DECEMBER 31, 2025

THIS PAGE IS INTENTIONALLY LEFT BLANK

Contents

MANAGEMENT REPORT OF FUND PERFORMANCE

Management Discussion of Fund Performance	5
Financial Highlights	10
Past Performance	13
Summary of Investment Portfolio	14

MANAGER'S RESPONSIBILITY FOR FINANCIAL REPORTING

INDEPENDENT AUDITOR'S REPORT

FINANCIAL STATEMENTS

Statement of Financial Position	20
Statement of Comprehensive Income	21
Statement of Changes in Financial Position	22
Statement of Cash Flows	23
Schedule of Investments	24
Notes to Financial Statements	33

A Message from the CEO

As we mark the end of 2025, I am proud to reflect on the growth we continue to achieve as a company and for our clients, through the innovative investment solutions we manage for Canadians.

In May, we marked the first anniversary of our successful rebrand from Horizons ETFs into Global X Investments Canada Inc. (“**Global X**”).

With investors like you in mind, our decision to rebrand was rooted in a desire to offer Canadians the best of both worlds: the strength, extended reach and global network of experts that come with the internationally recognized Global X brand, alongside the continued local expertise and support we offer for navigating the Canadian investment landscape.

As part of the Global X platform, we are part of something bigger: more than \$200 billion in ETF assets under management worldwide, backed by our parent company, Mirae Asset, which manages more than \$1 trillion in assets across 19 countries and global markets around the world.

Through it all, we remain committed to helping Canadians navigate and harness the emerging trends that shape markets and offering investment solutions and client experiences that are designed to be informative and relevant.

I am proud to highlight other successes that Global X has achieved so far this year, within our business and for our investors.

In June, Global X was recognized as the ETF Provider of the Year at the 2025 Wealth Professional Awards. This marks the second year in a row that we’ve earned this industry achievement. The award recognizes the outstanding asset management firm that specializes in exchange-traded funds (ETFs), which consistently delivers superior advisor service while pushing the boundaries with innovation and industry best practices over the last 12 months. This recognition reflects our commitment to delivering high-quality investment solutions and underscores Global X’s position as a Canadian ETF industry leader.

In 2025, we launched 30 ETFs that have offered Canadians new and innovative ways to access exposure to some of the most in-demand asset classes, strategies and commodities in today’s markets.

In February, we launched the Global X Artificial Intelligence Infrastructure Index ETF (“**MTRX**”) to offer Canadians a foundational way to access the broader infrastructure and service providers set to benefit from exponential AI expansion. MTRX offers foundational exposure to the commodity and energy suppliers, as well as data center operators, which are critical to support the growing demand for AI applications.

In April, we launched eleven more ETFs across multiple product lines, including thematic index ETFs, covered call ETFs, and our enhanced covered call ETF suite. Market dynamics, driven by economic and geopolitical events, have propelled popularity and inflows into many of these new ETFs, including the Global X Defence Tech Index ETF (“**SHLD**”), the Global X Bitcoin Covered Call ETF (“**BCCC**”) and the Global X Enhanced Gold Producer Equity Covered Call ETF (“**GLCL**”).

In the final months of 2025, we kept the momentum going by launching five more ETFs, including the Global X Silver Covered Call ETF (“**AGCC**”) and the Global X Copper Producer Equity Covered Call ETF (“**CPCC**”) – the world’s first copper covered call ETF. Other notable launches include our Global X China Hang Seng TECH Index ETF (“**CHQQ**”), which offers investors the potential to capture the global technology opportunity that is unfolding rapidly in China. We also expanded our fixed income lineup with the launch of the Global X 1-3 Year U.S. Treasury Bond Index ETF (“**TSTX**”) and the Global X 20+ Year U.S. Treasury Bond Index ETF (“**TLTX**”) to deliver U.S. Treasury exposure through products designed for Canadian investors.

At Global X, we embrace innovation in everything that we do. From our roots as one of Canada’s first ETF providers to our proud legacy of launching first-of-their-kind investment products, we are driven by boldness, vision, and a commitment to exceptional quality and client experience.

Under our Global X brand, our motto is “Innovation meets Investing”. We are committed to being there, alongside you, to help you explore a world of investment possibilities and global opportunities.

Thank you for your continued support.

Sincerely,



Rohit Mehta

President & CEO of Global X Investments Canada Inc.

MANAGEMENT REPORT OF FUND PERFORMANCE

This annual management report of fund performance for Global X Active Canadian Bond ETF (“HAD” or the “ETF”) contains financial highlights and is included with the audited annual financial statements for the investment fund. You may request a copy of the ETF’s unaudited interim or audited annual financial statements, interim or annual management report of fund performance, current proxy voting policies and procedures, proxy voting disclosure record, or quarterly portfolio disclosures, at no cost, from the ETF’s manager, Global X Investments Canada Inc. (“Global X” or the “Manager”), by calling toll free 1-866-641-5739, or locally (416) 933-5745, by writing to us at: 55 University Avenue, Suite 800, Toronto ON, M5J 2H7, or by visiting our website at www.globalx.ca or SEDAR+ at www.sedarplus.ca.

This document may contain forward-looking statements relating to anticipated future events, results, circumstances, performance, or expectations that are not historical facts but instead represent our beliefs regarding future events. By their nature, forward-looking statements require us to make assumptions and are subject to inherent risks and uncertainties. There is significant risk that predictions and other forward-looking statements will not prove to be accurate. We caution readers of this document not to place undue reliance on our forward-looking statements as a number of factors could cause actual future results, conditions, actions or events to differ materially from the targets, expectations, estimates or intentions expressed or implied in the forward-looking statements.

Actual results may differ materially from management expectations as projected in such forward-looking statements for a variety of reasons, including but not limited to market and general economic conditions, interest rates, regulatory and statutory developments, the effects of competition in the geographic and business areas in which the ETF may invest and the risks detailed from time to time in the ETF’s prospectus. New risk factors emerge from time to time and it is not possible for management to predict all such risk factors. We caution that the foregoing list of factors is not exhaustive, and that when relying on forward-looking statements to make decisions with respect to investing in the ETF, investors and others should carefully consider these factors, as well as other uncertainties and potential events, and the inherent uncertainty of forward-looking statements. Due to the potential impact of these factors, the Manager does not undertake, and specifically disclaims, any intention or obligation to update or revise any forward-looking statements, whether as a result of new information, future events or otherwise, unless required by applicable law.

Management Discussion of Fund Performance

Investment Objective and Strategies

The investment objective of HAD is to seek long-term returns primarily through maximized interest income and capital appreciation. HAD invests primarily in a portfolio of Canadian debt (including debt-like securities) denominated in Canadian dollars.

The Sub-Advisor, Fiera Capital Corporation (“Fiera” or the “Sub-Advisor”), uses research on Canadian economic conditions and their impact on interest rates to select debt (including debt-like securities) that, based on the Sub-Advisor’s view, are believed to offer superior risk adjusted returns relative to passively managed Canadian bond indices. When the Sub-Advisor believes that interest rates will increase, the Sub-Advisor may choose securities with shorter terms and when the Sub-Advisor believes that interest rates will decrease, the Sub-Advisor may choose securities with longer terms.

HAD is substantially invested at all times in a portfolio primarily composed of Canadian federal and provincial government bonds, debt (including debt-like securities) of Canadian corporate issuers and municipal bonds. HAD may also from time-to-time invest in foreign government, foreign government-backed and debt (including debt-like securities) of non-Canadian corporate issuers denominated in Canadian dollars, and certain high quality asset-backed securities.

HAD does not invest in bonds denominated in currencies other than the Canadian dollar.

HAD may from time to time also use both long and short futures contracts and forwards to manage its duration objective and hedge any resulting non-Canadian currency exposure to the Canadian Dollar.

Management Discussion of Fund Performance (continued)

HAD may rely on exemptions from the securities regulatory authorities allowing it to purchase securities of a related issuer of the Sub-Advisor if certain conditions are met. The investment must also be approved by the ETF's Independent Review Committee ("IRC") and is subject to certain other provisions of National Instrument 81-107 ("NI 81-107").

Please refer to the ETF's most recent prospectus for a complete description of HAD's investment restrictions.

Risk

The Manager performs a review of the ETF's risk rating at least annually, as well as when there is a material change in the ETF's investment objective or investment strategies. During the period, there were no changes to the ETF that materially affected the overall risk level associated with an investment in the ETF. The current risk rating for the ETF is: low.

Risk ratings are determined based on the historical volatility of the ETF as measured by the standard deviation of its performance against its mean. The risk categorization of the ETF may change over time and historical volatility is not indicative of future volatility. Generally, a risk rating is assigned to the ETF based on a rolling 10-year standard deviation of its returns, the return of an underlying index, or of an applicable proxy. In cases where the Manager believes that this methodology produces a result that is not indicative of the ETF's future volatility, the risk rating may be determined by the ETF's category. Risk ratings are not intended for use as a substitute for undertaking a proper and complete suitability or financial assessment by an investment advisor.

The risks and the full description of each risk to which an investment in the ETF is subject are disclosed in the ETF's most recent prospectus. The most recent prospectus is available at www.globalx.ca or from www.sedarplus.ca, or by contacting Global X Investments Canada Inc. directly via the contact information on the back page of this document.

Prospective investors should read the ETF's most recent prospectus and consider the full description of the risks contained therein before purchasing units.

Results of Operations

For the year ended December 31, 2025, units of the ETF returned 2.77% when including distributions paid to unitholders. This compares to a return of 2.40% for the ICE Bank of America Merrill Lynch Canada Broad Market Index (the "Index") for the same period.

The Index tracks the performance of Canadian dollar-denominated, investment-grade debt publicly issued in the Canadian domestic market, including sovereign, quasi-government, corporate, securitized and collateralized securities.

General Market Review

Financial markets in 2025 were shaped by a dynamic mix of policy uncertainty, shifting trade dynamics, and an evolving monetary policy environment. The year began with heightened volatility driven by political and trade-related developments but gradually transitioned toward a more constructive backdrop as central banks pivoted toward supporting growth. By year-end, risk assets had demonstrated resilience, supported by improving sentiment, attractive income opportunities, and a clear shift toward monetary accommodation.

The early part of the year was dominated by developments out of the U.S. following the inauguration of Donald Trump. The introduction of tariffs on key trading partners, including Canada, weighed on investor confidence and raised concerns around supply chains, inflation, and growth. In Canada, political transition added another layer of uncertainty as Mark Carney assumed leadership amid mixed economic data and renewed inflation concerns.

Management Discussion of Fund Performance (continued)

Market volatility intensified in the second quarter as details around reciprocal tariffs were unveiled, leading to a temporary sell-off in equities and wider credit spreads. As the quarter progressed, however, a series of extensions, walk-backs, and a moderation in trade rhetoric helped stabilize markets. By mid-year, investors had largely reassessed tariff risks as manageable, allowing markets to refocus on underlying fundamentals.

Monetary policy emerged as the dominant force influencing markets in 2025. After a cautious start to the year, central banks increasingly shifted their attention from inflation toward supporting growth and employment as labour markets softened. The Bank of Canada (the “BoC”) lowered its policy rate over the course of the year, responding to signs of economic weakness while emphasizing a data-dependent approach. Similarly, the Federal Reserve began easing policy in the second half of the year as employment conditions weakened and downside risks to growth became more pronounced, despite inflation remaining elevated.

This pivot helped anchor bond markets, improve financial conditions, and reinforce investor confidence, particularly in interest rate-sensitive and income-oriented asset classes.

Despite ongoing geopolitical tensions and fiscal uncertainty, risk sentiment improved steadily through the second half of the year. Equity markets recovered from early-year volatility, while credit markets benefited from strong demand and a favourable technical backdrop. Credit spreads tightened as investors sought to lock in attractive yields, supported by stable balance sheets and continued inflows into fixed income. Bond markets reflected these dynamics, with yield curves responding to both policy easing at the front end and fiscal considerations at longer maturities. Overall, the environment proved supportive for active credit positioning and disciplined risk-taking.

Portfolio Review

The fund delivered a positive absolute return in 2025 and outperformed the Index, supported by active duration management, disciplined credit exposure, and consistent security selection.

The primary contributors to performance over the year were active duration positioning and a measured credit overweight, with carry income playing a central role. While curve positioning was a modest headwind at times, particularly during periods of rising yields, this was more than offset by income generation and security selection within credit-sensitive sectors.

Credit exposure added value through a combination of carry, sector allocation, and issuer selection. The portfolio maintained corporate exposure below normal levels throughout the year, reflecting a cautious view that credit spreads did not consistently offer sufficient compensation for risk. Despite this conservative stance, credit positioning contributed positively, demonstrating effective issuer selection and portfolio construction.

Sector allocation contributed modestly to relative performance, led by Financials and Real Estate sectors, which were consistent positive contributors across the year. Allocations to corporate and municipal bonds added value, while exposure to provincial bonds detracted at various points. Security selection was a meaningful source of alpha. Within corporate credit, selection gains were concentrated in Financials, Real Estate, Infrastructure, and Securitization sectors, while municipal bond selection also contributed positively. Selection within federal and provincial bonds detracted modestly, reflecting relative value dynamics within those segments.

Portfolio activity throughout 2025 reflected a disciplined and opportunistic approach. The Sub-Advisor actively realized gains by taking profits in positions that had performed well and participated selectively in the primary market, focusing on short-dated, high-quality issuers and attractively priced opportunities. New issue participation spanned financial institutions, real estate-related issuers, infrastructure, securitization, and select hybrid structures.

Duration was actively managed in response to market volatility, with tactical adjustments made to take advantage of rising yields while maintaining overall risk discipline. Carry levels remained stable through most of the year, supporting returns despite shifting rate dynamics.

Management Discussion of Fund Performance (continued)

Outlook

The Sub-Advisor has revised the growth forecast higher and now expects the Canadian economy to achieve modest growth of approximately 1.5% over the next 12 to 18 months, as the impacts from tariffs remain manageable. The Sub-Advisor expects headline inflation to remain near target and core inflation to slow gradually, allowing the BoC to remain on hold at 2.25%, with a slight bias toward cutting to 2% if warranted.

Significant spending on Canadian infrastructure projects should support long-term investment and sentiment, while spillover effects from high U.S. spending should be net positive. However, uncertainty surrounding the upcoming Canada -United States -Mexico Agreement renewal, growing deficits, as well as the impact of higher rates on interest-sensitive sectors (e.g. housing and mortgage refinancing) could continue to weigh on the economy. Any slowdown in U.S. growth would likely impact Canada via contagion effects. Further, there is no shortage of geopolitical risks that could impact the outlook for rates and spreads.

The Sub-Advisor is currently long duration, particularly at the front end of the curve, where the market has begun to price in hikes for 2026. Prior to the BoC cut at the end of October, the market was pricing a September 2026 implied rate of 2.1%; by the end of the quarter, this had increased to 2.42% following better-than-expected economic data and the BoC's move to the sidelines. The Sub-Advisor believes the BoC will remain on hold longer than the market expects to offset any potential weakness or reversals in economic data caused by the risks noted above.

The Sub-Advisor maintains a very modest overweight in corporate bonds with a focus on short-dated issues where carry is attractive, and on quality trades where relative spreads are more appealing; however, the Sub-Advisor is cautious as spreads have narrowed considerably and are at the low end of their range post Global Financial Crisis.

Other Operating Items and Changes in Net Assets Attributable to Holders of Redeemable Units

For the year ended December 31, 2025, the ETF generated gross comprehensive income (loss) from investments and derivatives (which includes changes in the fair value of the ETF's portfolio) of \$1,455,177. This compares to \$1,920,598 for the year ended December 31, 2024. The ETF incurred management, operating and transaction expenses of \$238,003 (2024 – \$254,144) of which \$54,333 (2024 – \$65,825) was either paid or absorbed by the Manager on behalf of the ETF. The waiving and/or absorption of such fees and/or expenses by the Manager may be terminated at any time, or continued indefinitely, at the discretion of the Manager.

The ETF distributed \$1,537,576 to unitholders during the year (2024 – \$1,272,018).

Presentation

The attached financial statements have been prepared in accordance with IFRS Accounting Standards ("IFRS"). Any mention of total net assets, net assets, net asset value or increase (decrease) in net assets in the financial statements and/or management report of fund performance is referring to net assets or increase (decrease) in net assets attributable to holders of redeemable units as reported under IFRS.

Recent Developments

There are no recent industry, management or ETF related developments that are pertinent to the present and future of the ETF.

Management Discussion of Fund Performance (continued)

Related Party Transactions

Certain services have been provided to the ETF by related parties and those relationships are described below.

Manager, Trustee and Investment Manager

The manager, trustee and investment manager of the ETF is Global X Investments Canada Inc., 55 University Avenue, Suite 800, Toronto, Ontario, M5J 2H7, a corporation incorporated under the laws of Ontario.

If the ETF invests in other Global X ETFs, Global X may receive management fees in respect of the ETF's assets invested in such Global X ETFs. In addition, any management fees paid to the Manager (described in detail on page 12) are related party transactions, as the Manager is considered to be a related party to the ETF. Fees paid to the Independent Review Committee are also considered to be related party transactions. Both the management fees and fees paid to the Independent Review Committee are disclosed in the statement of comprehensive income in the attached financial statements of the ETF. The management fees payable by the ETF as at December 31, 2025 and 2024 are disclosed in the statement of financial position.

Financial Highlights

The following tables show selected key financial information about the ETF and are intended to help you understand the ETF's financial performance for the past five fiscal years. This information is derived from the ETF's audited annual financial statements. Please see the front page for information on how you may obtain the ETF's annual financial statements.

The ETF's Net Assets per Unit

Year ⁽¹⁾	2025	2024	2023	2022	2021
Net assets, beginning of year	\$ 9.10	9.03	8.71	10.29	11.00
Increase (decrease) from operations:					
Total revenue	0.34	0.33	0.30	0.26	0.26
Total expenses	(0.04)	(0.04)	(0.04)	(0.05)	(0.05)
Realized gains (losses) for the year	0.08	(0.09)	(0.64)	(0.55)	(0.35)
Unrealized gains (losses) for the year	(0.12)	0.19	0.96	(1.07)	(0.42)
Total increase (decrease) from operations ⁽²⁾	0.26	0.39	0.58	(1.41)	(0.56)
Distributions:					
From net investment income (excluding dividends)	(0.29)	(0.29)	(0.25)	(0.22)	(0.22)
From net realized capital gains	(0.02)	–	–	–	–
From return of capital	–	–	(0.02)	(0.05)	–
Total distributions ⁽³⁾	(0.31)	(0.29)	(0.27)	(0.27)	(0.22)
Net assets, end of year ⁽⁴⁾	\$ 9.04	9.10	9.03	8.71	10.29

1. This information is derived from the ETF's audited annual financial statements.

2. Net assets per unit and distributions are based on the actual number of units outstanding at the relevant time. The increase (decrease) from operations is based on the weighted average number of units outstanding over the financial period.

3. Income, dividend and/or return of capital distributions, if any, are paid in cash, reinvested in additional units of the ETF, or both. Capital gains distributions, if any, may or may not be paid in cash. Non-cash capital gains distributions are reinvested in additional units of the ETF and subsequently consolidated. They are reported as taxable distributions and increase each unitholder's adjusted cost base for their units. Neither the number of units held by the unitholder, nor the net asset per unit of the ETF change as a result of any non-cash capital gains distributions. Distributions classified as return of capital, if any, decrease each unitholder's adjusted cost base for their units. The characteristics of distributions, if any, are determined subsequent to the end of the ETF's tax year. Until such time, distributions are classified as from net investment income (excluding dividends) for reporting purposes.

4. The Financial Highlights are not intended to act as a continuity of the opening and closing net assets per unit.

Financial Highlights (continued)

Ratios and Supplemental Data

Year ⁽¹⁾	2025	2024	2023	2022	2021
Net asset value (000's)	43,643	42,809	36,152	37,058	57,408
Number of units outstanding (000's)	4,830	4,705	4,004	4,253	5,577
Management expense ratio ⁽²⁾	0.39%	0.46%	0.49%	0.50%	0.49%
Management expense ratio before waivers and absorptions ⁽³⁾	0.52%	0.62%	0.69%	0.68%	0.61%
Trading expense ratio ⁽⁴⁾	0.02%	0.02%	0.00%	0.00%	0.01%
Portfolio turnover rate ⁽⁵⁾	93.88%	187.52%	155.25%	161.49%	128.15%
Net asset value per unit, end of year	9.04	9.10	9.03	8.71	10.29
Closing market price	9.04	9.10	9.01	8.73	10.30

1. This information is provided as at December 31 of the years shown.

2. Management expense ratio is based on total expenses, including sales tax, (excluding commissions and other portfolio transaction costs) for the stated period and is expressed as an annualized percentage of daily average net asset value during the year. Out of its management fees, and waivers and absorptions, as applicable, the Manager pays for such services to the ETF as investment manager compensation and marketing.

3. The Manager, at its discretion, may waive and/or absorb a portion of the fees and/or expenses otherwise payable by the ETF. The waiving and/or absorption of such fees and/or expenses by the Manager may be terminated at any time, or continued indefinitely, at the discretion of the Manager.

4. The trading expense ratio represents total commissions and other portfolio transaction costs expressed as an annualized percentage of daily average net asset value during the period. Transaction costs related to the purchase and/or sale of fixed income securities are typically embedded in the price of those transactions and are therefore not included in the trading expense ratio.

5. The ETF's portfolio turnover rate indicates how actively its portfolio investments are traded. A portfolio turnover rate of 100% is equivalent to the ETF buying and selling all of the securities in its portfolio once in the course of the year. Generally, the higher the ETF's portfolio turnover rate in a year, the greater the trading costs payable by the ETF in the year, and the greater the chance of an investor receiving taxable capital gains in the year. There is not necessarily a relationship between a high turnover rate and the performance of the ETF.

Financial Highlights (continued)

Management Fees

The Manager provides, or oversees the provision of, administrative services required by the ETF including, but not limited to: negotiating contracts with certain third-party service providers, such as portfolio managers, custodians, registrars, transfer agents, auditors and printers; authorizing the payment of operating expenses incurred on behalf of the ETF; arranging for the maintenance of accounting records for the ETF; preparing reports to unitholders and to the applicable securities regulatory authorities; calculating the amount and determining the frequency of distributions by the ETF; preparing financial statements, income tax returns and financial and accounting information as required by the ETF; ensuring that unitholders are provided with financial statements and other reports as are required from time to time by applicable law; ensuring that the ETF complies with all other regulatory requirements, including the continuous disclosure obligations of the ETF under applicable securities laws; administering purchases, redemptions and other transactions in units of the ETF; and dealing and communicating with unitholders of the ETF. The Manager provides office facilities and personnel to carry out these services, if not otherwise furnished by any other service provider to the ETF. The Manager also monitors the investment strategies of the ETF to ensure that the ETF complies with its investment objectives, investment strategies and investment restrictions and practices.

In consideration for the provision of these services, the Manager receives a monthly management fee at the annual rate of 0.30%, plus applicable sales taxes, of the net asset value of the ETF's units, calculated and accrued daily and payable monthly in arrears.

The Sub-Advisor is compensated for its services out of the management fees without any further cost to the ETF. Any expenses of the ETF which are waived or absorbed by the Manager are paid out of the management fees received by the Manager.

The table below details, in percentage terms, the services received by the ETF from the Manager in consideration of the management fees paid during the year.

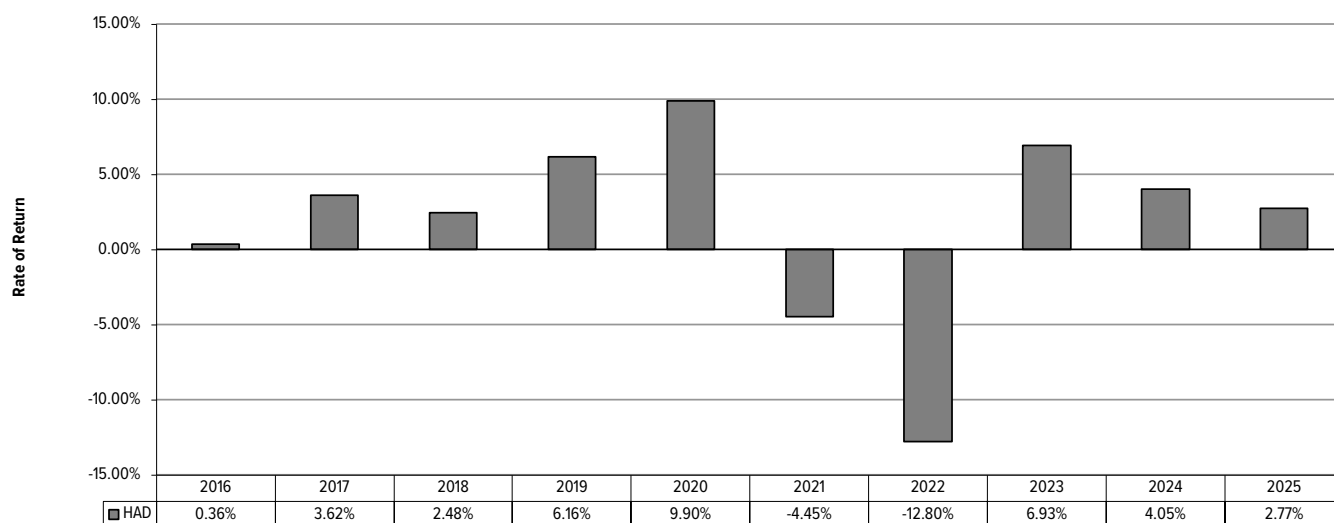
Marketing	Portfolio management fees, general administrative costs and profit	Waived/absorbed expenses of the ETF
9%	55%	36%

Past Performance

Commissions, management fees, expenses and applicable sales taxes all may be associated with an investment in the ETF. Please read the prospectus before investing. The indicated rates of return are the historical total returns including changes in unit value and reinvestment of all distributions, and do not take into account sales, redemptions, distributions or optional charges or income taxes payable by any investor that would have reduced returns. An investment in the ETF is not guaranteed. Its value changes frequently and past performance may not be repeated. The ETF's performance numbers assume that all distributions, if any, are reinvested in additional units of the ETF. If you hold this ETF outside of a registered plan, income and capital gains distributions that are paid to you increase your income for tax purposes whether paid to you in cash or reinvested in additional units. The amount of the reinvested taxable distributions is added to the adjusted cost base of the units that you own. This would decrease your capital gain or increase your capital loss when you later redeem from the ETF, thereby ensuring that you are not taxed on this amount again. Please consult your tax advisor regarding your personal tax situation.

Year-by-Year Returns

The following chart presents the ETF's performance for the periods shown, and illustrates how the performance has changed from period to period. In percentage terms, the chart shows how much an investment made on the first day of the financial period would have grown or decreased by the last day of the financial period.



The ETF effectively began operations on October 10, 2012.

Annual Compound Returns

The following table presents the ETF's annual compound total return since inception and for the periods shown ended December 31, 2025, along with a comparable market index. The table is used only to illustrate the effects of the compound growth rate and is not intended to reflect future values of the ETF or future returns on investments in the ETF.

	1 Year	3 Year	5 Year	10 Year	Since Inception
Global X Active Cdn Bond ETF	2.77%	4.57%	-0.96%	1.71%	2.00%
ICE BofA Merrill Lynch Canada Broad Market Index	2.40%	4.28%	-0.47%	1.83%	2.26%
Solactive Canadian Select Universe Bond Index	2.32%	4.21%	-0.45%	1.74%	2.15%

The ETF effectively began operations on October 10, 2012.

Summary of Investment Portfolio

As at December 31, 2025

Asset Mix	Net Asset Value	% of ETF's Net Asset Value
Canadian Fixed Income Securities	\$ 43,033,905	98.60%
U.S. Fixed Income Securities	439,314	1.01%
Cash and Cash Equivalents	37,246	0.09%
Other Assets less Liabilities	132,784	0.30%
	\$ 43,643,249	100.00%

Sector Mix	Net Asset Value	% of ETF's Net Asset Value
Corporate Bonds	\$ 16,070,195	36.83%
Government Bonds	13,815,800	31.66%
Provincial Bonds	9,852,712	22.58%
Municipal Bonds	2,598,997	5.95%
Asset-Backed Securities	661,628	1.51%
Mortgage Backed Securities	473,887	1.08%
Cash and Cash Equivalents	37,246	0.09%
Other Assets less Liabilities	132,784	0.30%
	\$ 43,643,249	100.00%

Summary of Investment Portfolio (continued)

As at December 31, 2025

Top 25 Holdings*	% of ETF's Net Asset Value
Government of Canada	28.29%
Province of Ontario	6.77%
Province of British Columbia	3.67%
Province of Quebec	3.44%
Province of Newfoundland and Labrador	2.93%
Royal Bank of Canada	2.82%
Canadian Imperial Bank of Commerce	2.60%
Toronto-Dominion Bank (The)	2.18%
Province of Alberta	1.75%
Bank of Montreal	1.73%
National Bank of Canada	1.71%
City of Montreal	1.54%
Canada Housing Trust No. 1	1.44%
Sun Life Financial Inc.	1.43%
Rogers Communications Inc.	1.36%
Fédération des caisses Desjardins du Québec	1.16%
SmartCentres REIT	1.12%
Bank of Nova Scotia (The)	1.06%
Province of Manitoba	1.06%
RioCan REIT	1.04%
Manulife Financial Corp.	0.94%
City of Toronto	0.93%
OPB Finance Trust	0.90%
British Columbia Investment Management Corp.	0.90%
PSP Capital Inc.	0.88%

* Note all of the Top 25 Holdings represent the aggregate debt instruments of that issuer in the ETF's portfolio.

The summary of investment portfolio may change due to the ongoing portfolio transactions of the ETF. The most recent financial statements are available at no cost by calling 1-866-641-5739, or (416) 933-5745, by writing to us at 55 University Avenue, Suite 800, Toronto, Ontario, M5J 2H7, by visiting our website at www.globalx.ca or through SEDAR+ at www.sedarplus.ca.

MANAGER'S RESPONSIBILITY FOR FINANCIAL REPORTING

The accompanying audited annual financial statements of Global X Active Canadian Bond ETF (the "ETF") are the responsibility of the manager and trustee to the ETF, Global X Investments Canada Inc. (the "Manager"). They have been prepared in accordance with IFRS Accounting Standards using information available and include certain amounts that are based on the Manager's best estimates and judgements.

The Manager has developed and maintains a system of internal controls to provide reasonable assurance that all assets are safeguarded and to produce relevant, reliable and timely financial information, including the accompanying financial statements.

These financial statements have been approved by the Board of Directors of the Manager and have been audited by KPMG LLP, Chartered Professional Accountants, Licensed Public Accountants, on behalf of unitholders. The independent auditor's report outlines the scope of their audit and their opinion on the financial statements.



Rohit Mehta
Director
Global X Investments Canada Inc.



Thomas Park
Director
Global X Investments Canada Inc.

INDEPENDENT AUDITOR'S REPORT

To the Unitholders of Global X Active Canadian Bond ETF

Opinion

We have audited the financial statements of Global X Active Canadian Bond ETF (the ETF), which comprise:

- the statement of financial position as at December 31, 2025 and December 31, 2024
- the statement of comprehensive income for the years then ended
- the statement of changes in financial position for the years then ended
- the statement of cash flows for the years then ended
- and notes to the financial statements, including a summary of material accounting policy information

(Hereinafter referred to as the “financial statements”).

In our opinion, the accompanying financial statements present fairly, in all material respects, the financial position of the ETF as at December 31, 2025 and December 31, 2024, and its financial performance and its cash flows for the years then ended in accordance with IFRS Accounting Standards.

Basis for Opinion

We conducted our audit in accordance with Canadian generally accepted auditing standards. Our responsibilities under those standards are further described in the “**Auditor’s Responsibilities for the Audit of the Financial Statements**” section of our auditor’s report.

We are independent of the ETF in accordance with the ethical requirements that are relevant to our audit of the financial statements in Canada and we have fulfilled our other ethical responsibilities in accordance with these requirements.

We believe that the audit evidence we have obtained is sufficient and appropriate to provide a basis for our opinion.

Other Information

Management is responsible for the other information. Other information comprises:

- the information included in the Management Report of Fund Performance.

Our opinion on the financial statements does not cover the other information and we do not and will not express any form of assurance conclusion thereon.

In connection with our audit of the financial statements, our responsibility is to read the other information identified above and, in doing so, consider whether the other information is materially inconsistent with the financial statements or our knowledge obtained in the audit and remain alert for indications that the other information appears to be materially misstated.

We obtained the information included in the Management Report of Fund Performance as at the date of this auditor's report. If, based on the work we have performed on this other information, we conclude that there is a material misstatement of this other information, we are required to report that fact in the auditor's report.

We have nothing to report in this regard.

Responsibilities of Management and Those Charged with Governance for the Financial Statements

Management is responsible for the preparation and fair presentation of the financial statements in accordance with IFRS Accounting Standards, and for such internal control as management determines is necessary to enable the preparation of financial statements that are free from material misstatement, whether due to fraud or error.

In preparing the financial statements, management is responsible for assessing the ETF's ability to continue as a going concern, disclosing as applicable, matters related to going concern and using the going concern basis of accounting unless management either intends to liquidate the ETF or to cease operations, or has no realistic alternative but to do so.

Those charged with governance are responsible for overseeing the ETF's financial reporting process.

Auditor's Responsibilities for the Audit of the Financial Statements

Our objectives are to obtain reasonable assurance about whether the financial statements as a whole are free from material misstatement, whether due to fraud or error, and to issue an auditor's report that includes our opinion.

Reasonable assurance is a high level of assurance, but is not a guarantee that an audit conducted in accordance with Canadian generally accepted auditing standards will always detect a material misstatement when it exists.

Misstatements can arise from fraud or error and are considered material if, individually or in the aggregate, they could reasonably be expected to influence the economic decisions of users taken on the basis of the financial statements.

As part of an audit in accordance with Canadian generally accepted auditing standards, we exercise professional judgment and maintain professional skepticism throughout the audit.

We also:

- Identify and assess the risks of material misstatement of the financial statements, whether due to fraud or error, design and perform audit procedures responsive to those risks, and obtain audit evidence that is sufficient and appropriate to provide a basis for our opinion.

The risk of not detecting a material misstatement resulting from fraud is higher than for one resulting from error, as fraud may involve collusion, forgery, intentional omissions, misrepresentations, or the override of internal control.

- Obtain an understanding of internal control relevant to the audit in order to design audit procedures that are appropriate in the circumstances, but not for the purpose of expressing an opinion on the effectiveness of the ETF's internal control.
- Evaluate the appropriateness of accounting policies used and the reasonableness of accounting estimates and related disclosures made by management.

- Conclude on the appropriateness of management's use of the going concern basis of accounting and, based on the audit evidence obtained, whether a material uncertainty exists related to events or conditions that may cast significant doubt on the ETF's ability to continue as a going concern. If we conclude that a material uncertainty exists, we are required to draw attention in our auditor's report to the related disclosures in the financial statements or, if such disclosures are inadequate, to modify our opinion. Our conclusions are based on the audit evidence obtained up to the date of our auditor's report. However, future events or conditions may cause the ETF to cease to continue as a going concern.
- Evaluate the overall presentation, structure and content of the financial statements, including the disclosures, and whether the financial statements represent the underlying transactions and events in a manner that achieves fair presentation.
- Communicate with those charged with governance regarding, among other matters, the planned scope and timing of the audit and significant audit findings, including any significant deficiencies in internal control that we identify during our audit.
- Provide those charged with governance with a statement that we have complied with relevant ethical requirements regarding independence, and communicate with them all relationships and other matters that may reasonably be thought to bear on our independence, and where applicable, related safeguards.



Chartered Professional Accountants, Licensed Public Accountants
The engagement partner on the audit resulting in this auditor's report is Robert D'Aroffi.
Toronto, Canada
March 16, 2026

Statement of Financial Position

As at December 31,

	2025	2024
Assets		
Cash and cash equivalents	\$ 37,246	\$ 120,647
Investments (note 6)	43,473,219	42,541,249
Amounts receivable relating to accrued income	296,899	286,813
Amounts receivable relating to portfolio assets sold	61,025	–
Total assets	43,868,389	42,948,709
Liabilities		
Accrued management fees (note 9)	13,376	12,690
Accrued operating expenses	2,474	2,666
Amounts payable for portfolio assets purchased	74,042	–
Distribution payable	135,248	124,676
Total liabilities	225,140	140,032
Net assets	\$ 43,643,249	\$ 42,808,677
Number of redeemable units outstanding (note 8)	4,830,292	4,704,771
Net assets per unit	\$ 9.04	\$ 9.10

(See accompanying notes to financial statements)

Approved on behalf of the Board of Directors of the Manager:



Rohit Mehta
Director



Thomas Park
Director

Statement of Comprehensive Income

For the Years Ended December 31,

	2025	2024
Income		
Interest income for distribution purposes	\$ 1,640,237	\$ 1,468,817
Securities lending income (note 7)	1,970	3,430
Net realized gain (loss) on sale of investments and derivatives	388,177	(401,523)
Net change in unrealized appreciation (depreciation) of investments and derivatives	(575,207)	849,874
	1,455,177	1,920,598
Expenses (note 9)		
Management fees	150,362	160,901
Audit fees	8,087	8,808
Independent Review Committee fees	606	708
Custodial and fund valuation fees	31,075	31,075
Legal fees	819	3,875
Securityholder reporting costs	12,426	11,092
Administration fees	26,640	28,721
Transaction costs	7,988	8,964
	238,003	254,144
Amounts that were payable by the investment fund that were paid or absorbed by the Manager	(54,333)	(65,825)
	183,670	188,319
Increase (decrease) in net assets for the year	\$ 1,271,507	\$ 1,732,279
Increase (decrease) in net assets per unit	\$ 0.26	\$ 0.39

(See accompanying notes to financial statements)

Statement of Changes in Financial Position

For the Years Ended December 31,

	2025	2024
Net assets at the beginning of the year	\$ 42,808,677	\$ 36,151,692
Increase (decrease) in net assets	1,271,507	1,732,279
Redeemable unit transactions		
Proceeds from the issuance of securities of the investment fund	5,449,961	7,782,300
Aggregate amounts paid on redemption of securities of the investment fund	(4,354,123)	(1,591,744)
Securities issued on reinvestment of distributions	4,803	6,168
Distributions:		
From net investment income	(1,457,349)	(1,270,580)
From net realized capital gains	(80,227)	–
Return of capital	–	(1,438)
Net assets at the end of the year	\$ 43,643,249	\$ 42,808,677

(See accompanying notes to financial statements)

Statement of Cash Flows

For the Years Ended December 31,

	2025	2024
Cash flows from operating activities:		
Increase (decrease) in net assets for the year	\$ 1,271,507	\$ 1,732,279
Adjustments for:		
Net realized (gain) loss on sale of investments and derivatives	(388,177)	401,523
Net change in unrealized (appreciation) depreciation of investments and derivatives	575,207	(849,874)
Purchase of investments	(42,563,797)	(79,453,876)
Proceeds from the sale of investments	41,244,003	73,183,111
Amounts receivable relating to accrued income	(10,086)	(84,547)
Accrued expenses	494	27
Net cash from (used in) operating activities	129,151	(5,071,357)
Cash flows from financing activities:		
Amount received/(paid) from the issuance of units	5,449,961	7,499,534
Amount (paid)/received on redemptions of units	(4,140,312)	(1,591,744)
Distributions paid to unitholders	(1,522,201)	(1,225,260)
Net cash from (used in) financing activities	(212,552)	4,682,530
Net increase (decrease) in cash and cash equivalents during the year	(83,401)	(388,827)
Cash and cash equivalents at beginning of year	120,647	509,474
Cash and cash equivalents at end of year	\$ 37,246	\$ 120,647
Supplemental Information:		
Interest received, net of withholding taxes	\$ 1,630,151	\$ 1,384,269

(See accompanying notes to financial statements)

Schedule of Investments

As at December 31, 2025

Security	Par Value	Average Cost	Fair Value
CANADIAN FIXED INCOME SECURITIES (98.60%)			
Corporate Bonds (35.82%)			
Allied Properties REIT, Series 'G', Callable, 3.13%, 2028/05/15	20,000 \$	17,855 \$	19,754
Allied Properties REIT, Series 'D', Callable, 3.39%, 2029/08/15	16,000	13,939	15,579
Allied Properties REIT, Series 'F', Callable, 3.12%, 2030/02/21	50,000	42,322	47,723
AltaGas Ltd., Callable, 2.08%, 2028/05/30	75,000	67,087	73,076
AltaGas Ltd., Variable Rate, Callable, 5.25%, 2082/01/11	107,000	94,695	107,308
Bank of Montreal, Callable, 4.31%, 2027/06/01	29,000	28,522	29,524
Bank of Montreal, Callable, 4.71%, 2027/12/07	56,000	55,698	57,660
Bank of Montreal, Callable, 4.54%, 2028/12/18	216,000	213,005	223,727
Bank of Montreal, Callable, 4.42%, 2029/07/17	206,000	206,014	213,311
Bank of Montreal, Variable Rate, Callable, 3.11%, 2029/10/27	54,000	54,000	53,841
Bank of Montreal, Variable Rate, Callable, 6.53%, 2032/10/27	75,000	78,114	79,357
Bank of Montreal, Variable Rate, Callable, 4.98%, 2034/07/03	96,000	96,000	100,035
Bank of Nova Scotia (The), 4.68%, 2029/02/01	164,000	162,554	170,834
Bank of Nova Scotia (The), Floating Rate, Callable, 3.84%, 2030/09/26	25,000	25,000	25,332
Bank of Nova Scotia (The), Variable Rate, Callable, 3.93%, 2032/05/03	100,000	96,343	101,090
Bank of Nova Scotia (The), Variable Rate, Callable, 7.02%, 2082/07/27	160,000	160,000	166,891
Bell Canada, 5.15%, 2034/08/24	104,000	103,632	109,538
Bell Canada, Series 'M-17', Callable, 6.10%, 2035/03/16	72,000	79,367	80,293
Bell Canada, Callable, 5.15%, 2053/02/09	120,000	118,147	117,834
British Columbia Investment Management Corp., 4.00%, 2035/06/02	389,000	384,542	392,591
Brookfield Infrastructure Finance ULC, Callable, 5.44%, 2034/04/25	69,000	69,000	73,725
Brookfield Renewable Partners ULC, Callable, 4.25%, 2029/01/15	75,000	72,776	76,731
Canadian Imperial Bank of Commerce, Callable, 4.95%, 2027/06/29	310,000	310,369	318,606
Canadian Imperial Bank of Commerce, Callable, 5.05%, 2027/10/07	107,000	107,458	110,512
Canadian Imperial Bank of Commerce, Variable Rate, Callable, 3.80%, 2030/12/10	72,000	71,880	72,795
Canadian Imperial Bank of Commerce, Variable Rate, Callable, 4.20%, 2032/04/07	100,000	97,036	101,364
Canadian Imperial Bank of Commerce, Variable Rate, Callable, 5.33%, 2033/01/20	75,000	75,040	77,937
Canadian Imperial Bank of Commerce, Variable Rate, Callable, 5.30%, 2034/01/16	147,000	146,878	154,138
Canadian Imperial Bank of Commerce, Variable Rate, Callable, 4.90%, 2034/06/12	69,000	68,897	71,690
Canadian Imperial Bank of Commerce, Variable Rate, Callable, 4.15%, 2035/04/02	79,000	78,887	79,805
Canadian Imperial Bank of Commerce, Variable Rate, Callable, 7.15%, 2082/07/28	146,000	145,727	152,640
Canadian Western Bank, 4.57%, 2028/07/11	80,000	80,000	82,833
Canvas Cards Trust, Series 'A', 3.60%, 2028/06/15	68,000	68,000	68,543

Schedule of Investments (continued)

As at December 31, 2025

Security	Par Value	Average Cost	Fair Value
Capital City Link G.P., Series 'A', Sinkable, Callable, 4.39%, 2046/03/31	101,776	106,347	97,625
CHIP Mortgage Trust, Callable, 3.87%, 2031/02/01	97,000	97,000	96,443
CHIP Mortgage Trust, 4.24%, 2050/01/28	58,000	58,000	58,830
Choice Properties REIT, Series 'L', Callable, 4.18%, 2028/03/08	98,000	94,966	99,861
Choice Properties REIT, Series 'M', Callable, 3.53%, 2029/06/11	50,000	46,383	50,163
Choice Properties REIT, Callable, 5.03%, 2031/02/28	41,000	40,998	43,072
Choice Properties REIT, Series 'R', Callable, 6.00%, 2032/06/24	10,000	10,000	11,010
Choice Properties REIT, Callable, 5.40%, 2033/03/01	49,000	49,000	52,319
Choice Properties REIT, Callable, 5.70%, 2034/02/28	54,000	53,996	58,708
Coastal Gaslink Pipeline L.P., Series 'J', Sinkable, 5.86%, 2049/03/30	35,000	35,000	38,876
Coastal GasLink Pipeline L.P., Series 'I', 5.61%, 2047/03/30	33,000	37,064	35,658
Connect 6ix G.P., Sinkable, 6.11%, 2046/11/30	67,000	67,000	74,936
Crombie REIT, Series 'G', Callable, 3.92%, 2027/06/21	50,000	48,102	50,499
Crombie REIT, Series 'H', Callable, 2.69%, 2028/03/31	50,000	45,522	49,236
Crombie REIT, Callable, 5.24%, 2029/09/28	50,000	49,729	52,330
Crombie REIT, Callable, 5.14%, 2030/03/29	50,000	49,324	52,140
Crombie REIT, Callable, 4.73%, 2032/01/15	93,000	94,866	94,752
CT REIT, Series 'F', Callable, 3.87%, 2027/12/07	75,000	71,553	75,663
CT REIT, Callable, 3.03%, 2029/02/05	50,000	45,182	49,195
CU Inc., Callable, 3.96%, 2045/07/27	85,000	96,275	76,104
CU Inc., Callable, 3.17%, 2051/09/05	49,000	48,640	37,099
Dream Summit Industrial L.P., Callable, 5.11%, 2029/02/12	59,000	59,639	61,472
Dream Summit Industrial L.P., Callable, 4.17%, 2030/09/18	115,000	115,000	115,599
Dream Summit Industrial L.P., Callable, 4.51%, 2031/02/12	42,000	41,992	42,644
Enbridge Gas Inc., Callable, 4.55%, 2052/08/17	99,000	90,902	93,785
Enbridge Inc., Series 'C', Variable Rate, Callable, 6.63%, 2078/04/12	75,000	74,730	79,259
ENMAX Corp., Series '8', Callable, 4.70%, 2034/10/09	63,000	63,000	64,596
Fédération des caisses Desjardins du Québec, Callable, 5.47%, 2028/11/17	275,000	281,087	291,222
Fédération des caisses Desjardins du Québec, 3.80%, 2029/09/24	100,000	100,000	101,415
Fédération des caisses Desjardins du Québec, Variable Rate, Callable, 5.04%, 2032/08/23	111,000	110,143	114,297
First Nations ETF L.P., Series '1A', Sinkable, 4.14%, 2041/12/31	31,334	28,195	30,399
Ford Credit Canada Co. of Canada, Callable, 4.82%, 2028/09/11	49,000	49,000	49,682
FortisBC Inc., Callable, 5.90%, 2047/07/04	50,000	57,217	55,705
General Motors Financial of Canada Ltd., Series '14', Callable, 3.80%, 2030/11/07	76,000	75,889	75,344
George Weston Ltd., Callable, 4.19%, 2029/09/05	50,000	50,000	50,887
Gibson Energy Inc., Callable, 3.60%, 2029/09/17	16,000	14,941	15,964
Great-West Lifeco Inc., 6.00%, 2039/11/16	55,000	62,416	61,403
Health Montreal Collective L.P., Sinkable, 6.72%, 2049/09/30	133,644	149,073	157,578
Helocs Trust, Series 'A', 3.77%, 2027/10/23	152,000	152,000	153,932

Schedule of Investments (continued)

As at December 31, 2025

Security	Par Value	Average Cost	Fair Value
Husky Midstream L.P., Callable, 4.10%, 2029/12/02	49,000	48,902	49,881
Hydro One Inc., Callable, 4.59%, 2043/10/09	50,000	49,639	49,089
Hydro One Inc., Callable, 3.72%, 2047/11/18	67,000	68,164	57,266
Hyundai Capital Canada Inc., 3.57%, 2028/09/05	60,000	60,000	60,393
iA Financial Corp. Inc., Variable Rate, Callable, 5.69%, 2033/06/20	100,000	101,504	105,338
iA Financial Corp. Inc., Variable Rate, Callable, 4.13%, 2034/12/05	75,000	75,000	76,085
Independent Order of Foresters (The), Series '20-1', Variable Rate, Callable, 2.89%, 2035/10/15	258,000	207,422	244,028
Inter Pipeline Ltd., Series '14', Callable, 5.85%, 2032/05/18	184,000	183,386	199,329
Inter Pipeline Ltd., Variable Rate, Callable, 6.75%, 2054/12/12	50,000	50,000	51,931
Keyera Corp., Series '6', Callable, 4.20%, 2033/04/15	81,000	80,998	80,392
Laurentian Bank of Canada, 4.19%, 2028/01/23	129,000	129,000	130,373
Laurentian Bank of Canada, Variable Rate, Callable, 5.10%, 2032/06/15	78,000	74,100	78,420
Le Carrefour Laval Rec Inc., Callable, 4.20%, 2030/08/14	57,000	57,000	57,565
Loblaw Cos. Ltd., Callable, 6.50%, 2029/01/22	56,000	60,823	60,668
Loblaw Cos. Ltd., Callable, 6.05%, 2034/06/09	30,000	33,078	33,421
Loblaw Cos. Ltd., Callable, 6.15%, 2035/01/29	86,000	91,126	96,835
Loblaw Cos. Ltd., Callable, 6.45%, 2039/03/01	54,000	61,952	60,518
Manulife Financial Corp., Variable Rate, Callable, 5.41%, 2033/03/10	241,000	246,989	251,698
Manulife Financial Corp., Variable Rate, Callable, 7.12%, 2082/06/19	151,000	151,000	157,229
MCAP Commercial L.P., Callable, 3.38%, 2027/11/26	60,000	54,910	59,847
Metro Inc., Callable, 4.00%, 2029/11/27	69,000	69,000	70,360
National Bank of Canada, 5.22%, 2028/06/14	152,000	153,775	159,354
National Bank of Canada, Variable Rate, Callable, 3.44%, 2031/10/21	170,000	170,000	168,359
National Bank of Canada, Variable Rate, Callable, 5.28%, 2034/02/15	106,000	105,775	111,161
National Bank of Canada, Variable Rate, Callable, 4.26%, 2035/02/15	183,000	182,991	185,834
National Bank of Canada, Variable Rate, Callable, 4.33%, 2035/08/15	116,000	115,991	117,786
North Battleford Power L.P., Series 'A', Sinkable, 4.96%, 2032/12/31	12,312	12,812	12,715
Nova Scotia Power Inc., Callable, 4.95%, 2032/11/15	70,000	70,313	72,983
Pembina Pipeline Corp., Series '15', Callable, 3.31%, 2030/02/01	42,000	41,852	41,644
Pembina Pipeline Corp., Callable, 5.21%, 2034/01/12	116,000	115,920	122,497
Pembina Pipeline Corp., Series '4', Callable, 4.81%, 2044/03/25	60,000	56,235	57,200
Pembina Pipeline Corp., Callable, 4.67%, 2050/05/28	75,000	63,750	68,756
Pembina Pipeline Corp., Convertible Bonds, Series '2', Variable Rate, Callable, 5.95%, 2055/06/06	61,000	62,319	62,363
Reliance L.P., Callable, 2.67%, 2028/08/01	50,000	44,624	49,114
Reliance L.P., Callable, 5.25%, 2031/05/15	36,000	35,998	37,937
Reliance L.P., Callable, 4.39%, 2032/04/16	131,000	131,393	132,007
RioCan REIT, Callable, 5.61%, 2027/10/06	75,000	75,381	77,843
RioCan REIT, 4.00%, 2028/03/01	89,000	89,442	90,158
RioCan REIT, Callable, 4.63%, 2029/05/01	62,000	61,999	63,676

Schedule of Investments (continued)

As at December 31, 2025

Security	Par Value	Average Cost	Fair Value
RioCan REIT, Callable, 5.47%, 2030/03/01	75,000	74,247	79,097
RioCan REIT, Callable, 5.46%, 2031/03/01	67,000	66,982	70,770
RioCan REIT, Callable, 4.62%, 2031/10/03	68,000	68,799	68,965
Rogers Communications Inc., Callable, 3.65%, 2027/03/31	160,000	153,946	161,002
Rogers Communications Inc., Callable, 6.68%, 2039/11/04	145,000	166,460	167,801
Rogers Communications Inc., Callable, 6.75%, 2039/11/09	43,000	50,229	50,221
Rogers Communications Inc., 6.11%, 2040/08/25	36,000	38,951	39,693
Rogers Communications Inc., Callable, 5.25%, 2052/04/15	55,000	51,350	54,907
Rogers Communications Inc., Variable Rate, Callable, 5.00%, 2081/12/17	116,000	111,795	117,386
Royal Bank of Canada, Variable Rate, Callable, 3.63%, 2028/12/10	652,000	652,000	658,314
Royal Bank of Canada, Variable Rate, Callable, 3.41%, 2029/06/12	308,000	308,000	309,419
Royal Bank of Canada, Variable Rate, Callable, 3.99%, 2031/07/22	58,000	58,000	58,958
Royal Bank of Canada, Variable Rate, Callable, 4.21%, 2035/07/03	200,000	200,000	202,688
SEC L.P. and Arci Ltd., Sinkable, Callable, 5.19%, 2033/08/29	67,325	68,851	66,655
SGTP Highway Bypass L.P., Series 'A', Sinkable, Callable, 4.11%, 2045/01/31	107,735	95,399	103,182
Sienna Senior Living Inc., Series 'C', Callable, 2.82%, 2027/03/31	50,000	46,244	49,825
Sienna Senior Living Inc., Series 'F', 3.52%, 2028/12/18	51,000	51,000	51,104
Sienna Senior Living Inc., Callable, 4.44%, 2029/10/17	23,000	23,000	23,565
Sienna Senior Living Inc., Series 'E', Callable, 4.11%, 2030/08/21	53,000	53,000	53,431
SmartCentres REIT, Series 'V', Callable, 3.19%, 2027/06/11	125,000	117,675	125,056
SmartCentres REIT, Series 'S', Callable, 3.83%, 2027/12/21	80,000	80,830	80,672
SmartCentres REIT, Series 'Y', Callable, 2.31%, 2028/12/18	94,000	87,328	90,815
SmartCentres REIT, Series 'U', Callable, 3.53%, 2029/12/20	48,000	47,039	47,379
SmartCentres REIT, 5.16%, 2030/08/01	25,000	25,000	26,094
SmartCentres REIT, Series 'W', Callable, 3.65%, 2030/12/11	58,000	56,105	56,834
SmartCentres REIT, Series 'AD', Callable, 4.32%, 2032/06/12	63,000	62,997	62,272
SNC-Lavalin Innisfree McGill Finance Inc., Callable, 6.63%, 2044/06/30	117,188	135,429	137,029
SSL Finance Inc. / SSL Financement Inc., Series 'A', Sinkable, Callable, 4.10%, 2045/10/31	102,206	90,107	96,530
Stonlasec8 Indigenous Investments L.P., Series '1', Sinkable, 5.17%, 2055/07/06	52,000	52,000	52,261
Sun Life Financial Inc., Variable Rate, Callable, 2.58%, 2032/05/10	85,000	79,231	84,490
Sun Life Financial Inc., Variable Rate, Callable, 2.80%, 2033/11/21	100,000	91,026	98,547
Sun Life Financial Inc., Variable Rate, Callable, 4.78%, 2034/08/10	19,000	18,938	19,777
Sun Life Financial Inc., Variable Rate, Callable, 5.50%, 2035/07/04	17,000	16,982	18,223
Sun Life Financial Inc., Variable Rate, Callable, 5.12%, 2036/05/15	102,000	102,000	107,838
Sun Life Financial Inc., Variable Rate, Callable, 4.14%, 2037/09/13	192,000	192,187	191,555
Sun Life Financial Inc., Variable Rate, Callable, 4.56%, 2040/12/03	99,000	98,929	98,515
Suncor Energy Inc., Callable, 5.00%, 2030/04/09	3,000	2,991	3,105
Superior Plus L.P., Callable, 4.25%, 2028/05/18	64,000	60,160	63,000
TELUS Corp., Callable, 5.65%, 2052/09/13	114,000	118,848	120,060

Schedule of Investments (continued)

As at December 31, 2025

Security	Par Value	Average Cost	Fair Value
Toronto-Dominion Bank (The), 5.49%, 2028/09/08	258,000	272,617	272,957
Toronto-Dominion Bank (The), 4.68%, 2029/01/08	184,000	182,881	191,470
Toronto-Dominion Bank (The), Variable Rate, Callable, 4.00%, 2030/10/31	73,000	73,000	74,349
Toronto-Dominion Bank (The), Variable Rate, Callable, 5.18%, 2034/04/09	100,000	99,596	104,733
Toronto-Dominion Bank (The), Variable Rate, Callable, 4.23%, 2035/02/01	120,000	120,000	121,970
Toronto-Dominion Bank (The), Variable Rate, Callable, 7.28%, 2082/10/31	174,000	174,000	183,894
TransCanada PipeLines Ltd., Callable, 3.80%, 2027/04/05	50,000	48,462	50,377
TransCanada PipeLines Ltd., Callable, 4.58%, 2035/02/20	72,000	72,000	72,962
TransCanada PipeLines Ltd., Callable, 8.05%, 2039/02/17	46,000	57,051	59,134
TransCanada PipeLines Ltd., Callable, 4.34%, 2049/10/15	174,000	142,235	154,221
Trillium M Project Co. G.P., Series 'B', Sinkable, 5.19%, 2062/10/31	130,000	130,000	132,723
Trillium M Project Co. General Partnership, Series 'A', Sinkable, 4.85%, 2043/04/30	61,000	61,000	62,779
Vancouver Airport Fuel Facilities Corp., Series 'L', Callable, 5.06%, 2065/06/04	23,905	23,905	23,905
		15,184,320	15,630,881
Government Bonds (31.66%)			
Canada Housing Trust No. 1, 3.55%, 2032/09/15	165,000	158,063	167,375
Canada Housing Trust No. 1, 3.65%, 2033/06/15	233,000	227,894	237,062
Canada Housing Trust No. 1, 4.25%, 2034/03/15	214,000	218,436	225,736
CPPIB Capital Inc., 4.30%, 2034/06/02	174,000	179,467	181,728
CPPIB Capital Inc., 4.00%, 2035/06/02	91,000	90,849	92,332
Government of Canada, 2.00%, 2028/06/01	60,000	58,786	59,107
Government of Canada, 3.25%, 2028/09/01	233,000	237,090	236,255
Government of Canada, 2.25%, 2029/06/01	19,000	18,844	18,670
Government of Canada, 1.25%, 2030/06/01	702,000	643,339	653,394
Government of Canada, 2.75%, 2030/09/01	2,211,000	2,199,868	2,190,433
Government of Canada, 2.75%, 2031/03/01	862,000	850,751	850,840
Government of Canada, 1.50%, 2031/06/01	1,353,000	1,237,022	1,248,902
Government of Canada, 1.50%, 2031/12/01	298,000	272,065	272,313
Government of Canada, 2.00%, 2032/06/01	2,300,000	2,141,908	2,146,239
Government of Canada, 2.75%, 2033/06/01	276,000	270,850	267,339
Government of Canada, 3.00%, 2034/06/01	594,000	594,978	580,596
Government of Canada, 3.25%, 2034/12/01	733,000	733,608	727,562
Government of Canada, 3.25%, 2035/06/01	642,000	635,477	635,077
Government of Canada, 3.25%, 2035/12/01	521,000	513,530	513,469
Government of Canada, 5.00%, 2037/06/01	66,000	74,192	75,286
Government of Canada, 2.00%, 2051/12/01	583,000	413,658	407,102
Government of Canada, 1.75%, 2053/12/01	850,000	572,530	545,913
Government of Canada, 2.75%, 2055/12/01	718,000	592,440	578,282

Schedule of Investments (continued)

As at December 31, 2025

Security	Par Value	Average Cost	Fair Value
Government of Canada, 3.50%, 2057/12/01	218,000	205,214	204,095
Government of Canada, 2.75%, 2064/12/01	170,000	135,551	132,604
PSP Capital Inc., Series '12', 2.05%, 2030/01/15	87,000	77,246	83,704
PSP Capital Inc., 4.25%, 2055/12/01	319,000	308,361	299,655
Royal Office Finance L.P., Series 'A', Sinkable, Callable, 5.21%, 2032/11/12	171,437	202,784	184,730
		13,864,801	13,815,800
Provincial Bonds (22.58%)			
Hydro-Québec, 3.55%, 2032/09/01	179,000	179,465	179,430
OPB Finance Trust, Series 'A', Callable, 3.89%, 2042/07/04	429,000	459,027	393,077
Province of Alberta, 3.90%, 2033/12/01	108,000	103,092	110,322
Province of Alberta, 4.50%, 2040/12/01	98,000	95,753	100,045
Province of Alberta, 3.30%, 2046/12/01	142,000	114,049	117,638
Province of Alberta, 3.05%, 2048/12/01	286,000	242,549	223,128
Province of Alberta, 3.10%, 2050/06/01	238,000	198,991	185,378
Province of Alberta, 4.45%, 2054/12/01	29,000	28,251	28,283
Province of British Columbia, 5.86%, 2029/06/18	284,000	305,878	311,233
Province of British Columbia, 4.15%, 2034/06/18	210,000	209,559	216,894
Province of British Columbia, 4.00%, 2035/06/18	143,000	144,165	144,724
Province of British Columbia, 4.70%, 2037/06/18	58,000	58,317	61,158
Province of British Columbia, 4.30%, 2042/06/18	47,000	44,594	46,242
Province of British Columbia, 3.20%, 2044/06/18	170,000	136,330	141,604
Province of British Columbia, 2.95%, 2050/06/18	171,000	126,323	128,740
Province of British Columbia, 2.75%, 2052/06/18	21,000	14,793	15,005
Province of British Columbia, 4.25%, 2053/12/18	185,000	178,566	173,739
Province of British Columbia, 4.45%, 2055/12/18	172,000	178,279	166,808
Province of British Columbia, 4.60%, 2057/06/18	195,000	194,698	194,117
Province of Manitoba, 2.05%, 2030/06/02	10,000	8,819	9,576
Province of Manitoba, 5.70%, 2037/03/05	35,000	38,246	39,923
Province of Manitoba, 4.10%, 2041/03/05	130,000	119,172	125,170
Province of Manitoba, 4.40%, 2042/03/05	50,000	47,420	49,546
Province of Manitoba, 4.05%, 2045/09/05	25,000	22,315	23,130
Province of Manitoba, 2.85%, 2046/09/05	141,000	134,540	107,280
Province of Manitoba, 3.20%, 2050/03/05	101,000	76,956	79,241
Province of Manitoba, 3.80%, 2053/09/05	35,000	29,614	30,200
Province of New Brunswick, Sinkable, 4.80%, 2039/09/26	10,000	10,013	10,515
Province of New Brunswick, 3.80%, 2045/08/14	52,000	44,888	46,515
Province of New Brunswick, 3.10%, 2048/08/14	49,000	37,025	38,197
Province of New Brunswick, 3.05%, 2050/08/14	114,000	84,499	86,734
Province of New Brunswick, 5.00%, 2054/08/14	47,000	48,898	49,192
Province of Newfoundland and Labrador, 2.85%, 2029/06/02	246,000	229,800	245,030

Schedule of Investments (continued)

As at December 31, 2025

Security	Par Value	Average Cost	Fair Value
Province of Newfoundland and Labrador, 1.75%, 2030/06/02	74,000	63,644	69,836
Province of Newfoundland and Labrador, 3.15%, 2030/06/02	121,000	120,849	121,068
Province of Newfoundland and Labrador, 4.15%, 2033/06/02	118,000	113,733	122,269
Province of Newfoundland and Labrador, Series '6R', 5.60%, 2033/10/17	150,000	160,245	169,654
Province of Newfoundland and Labrador, 3.85%, 2034/12/02	160,000	159,444	160,359
Province of Newfoundland and Labrador, 4.00%, 2035/06/02	220,000	218,294	221,794
Province of Newfoundland and Labrador, Series '7H', 2.65%, 2050/10/17	87,000	71,062	60,179
Province of Newfoundland and Labrador, 3.15%, 2052/12/02	80,000	79,142	60,469
Province of Newfoundland and Labrador, 4.10%, 2054/10/17	51,000	44,205	45,529
Province of Nova Scotia, 4.40%, 2042/06/01	61,000	73,371	60,345
Province of Nova Scotia, 3.15%, 2051/12/01	143,000	107,968	110,186
Province of Nova Scotia, 4.75%, 2054/12/01	36,000	36,016	36,248
Province of Nova Scotia, 4.60%, 2055/12/01	93,000	92,981	91,585
Province of Ontario, 1.35%, 2030/12/02	630,000	528,676	578,811
Province of Ontario, 2.15%, 2031/06/02	495,000	452,941	468,787
Province of Ontario, 3.65%, 2033/06/02	465,000	439,825	469,089
Province of Ontario, 4.15%, 2034/06/02	162,000	164,561	167,600
Province of Ontario, 3.60%, 2035/06/02	123,000	120,450	120,940
Province of Ontario, 4.70%, 2037/06/02	395,000	402,577	417,875
Province of Ontario, 4.60%, 2039/06/02	140,000	146,041	145,456
Province of Ontario, 4.65%, 2041/06/02	129,000	132,959	133,235
Province of Ontario, 2.90%, 2046/12/02	332,000	257,679	258,134
Province of Ontario, 2.90%, 2049/06/02	123,000	90,746	93,188
Province of Ontario, 4.60%, 2055/12/02	100,000	99,482	100,241
Province of Quebec, 4.45%, 2034/09/01	144,000	153,661	151,275
Province of Quebec, 5.00%, 2041/12/01	247,000	255,486	262,184
Province of Quebec, 4.25%, 2043/12/01	178,000	196,214	171,161
Province of Quebec, 3.50%, 2045/12/01	251,000	249,659	214,373
Province of Quebec, 3.50%, 2048/12/01	240,000	199,010	200,212
Province of Quebec, 3.10%, 2051/12/01	95,000	72,303	72,663
Province of Quebec, 4.40%, 2055/12/01	363,000	368,444	346,409
Province of Quebec, 4.20%, 2057/12/01	88,000	88,136	81,159
Province of Saskatchewan, 2.75%, 2046/12/02	148,000	107,723	111,694
Province of Saskatchewan, 3.30%, 2048/06/02	14,000	11,153	11,442
Province of Saskatchewan, 3.10%, 2050/06/02	53,000	40,399	41,243
Province of Saskatchewan, 2.80%, 2052/12/02	39,000	27,691	28,206
		9,891,654	9,852,712

Schedule of Investments (continued)

As at December 31, 2025

Security	Par Value	Average Cost	Fair Value
Municipal Bonds (5.95%)			
Access Justice Durham Ltd., Series 'A', 5.02%, 2039/08/31	94,469	97,696	97,986
City of Greater Sudbury, 2.42%, 2050/03/12	90,000	60,750	59,095
City of Montreal, 2.00%, 2031/09/01	95,000	80,188	88,250
City of Montreal, 4.25%, 2033/09/01	91,000	88,042	93,972
City of Montreal, 3.90%, 2034/09/01	186,000	186,121	186,057
City of Montreal, 3.50%, 2038/12/01	90,000	76,640	82,095
City of Montreal, 4.75%, 2045/12/01	222,000	222,346	220,613
City of Ottawa, 3.10%, 2048/07/27	155,000	123,157	119,338
City of Regina, 4.95%, 2055/09/10	38,000	37,953	38,753
City of Toronto, 2.90%, 2051/04/29	557,000	449,387	405,378
City of Winnipeg, 4.65%, 2064/06/01	52,000	51,566	50,308
Regional Municipality of Peel, 4.65%, 2055/12/02	171,000	169,938	167,756
TCHC Issuer Trust, Series 'A', Callable, 4.88%, 2037/05/11	279,000	323,182	292,944
Ville de Granby, 3.55%, 2030/06/02	65,000	64,004	64,792
Ville de Montreal, 3.90%, 2035/09/01	146,000	145,715	144,456
Ville de Pointe-Claire, 3.00%, 2028/01/31	100,000	106,196	99,714
Ville de Rimouski, 3.30%, 2030/06/16	83,000	80,773	81,863
Ville de Saint-Hyacinthe, 3.10%, 2028/02/28	206,000	215,016	205,751
Ville de Sherbrooke, 3.10%, 2028/03/01	100,000	106,371	99,876
		2,685,041	2,598,997
Asset-Backed Securities (1.51%)			
BMW Canada Auto Trust, Class 'A3', Series '23-1', Callable, 3.54%, 2028/01/20	27,000	27,000	27,155
CNH Capital Canada Receivables Trust II, Class 'A2', Series '25-1', Callable, 3.49%, 2032/12/15	60,000	60,000	60,298
Eagle Credit Card Trust, Series 'A', 4.92%, 2029/06/17	57,000	57,000	59,760
Ford Auto Securitization Trust, Class 'A2', Series '25-A', Callable, 3.28%, 2029/11/15	89,000	89,000	89,438
Ford Auto Securitization Trust, Class 'A2', Series '25-B', Callable, 2.99%, 2030/03/15	53,000	53,000	52,843
Ford Auto Securitization Trust II, Class 'A3', Series '24-B', Callable, 3.84%, 2030/09/15	56,000	56,000	56,686
Ford Auto Securitization Trust II, Class 'A3', Series '25-A', Callable, 3.61%, 2031/02/15	66,000	66,000	66,297
Ford Auto Securitization Trust, Class 'A3', Series '25-B', Callable, 3.30%, 2031/08/15	57,000	57,000	56,547
Glacier Credit Card Trust, 3.91%, 2030/09/20	136,000	136,000	137,253
GMF Canada Leasing Trust, Class 'A3', Series '24-1', Callable, 4.83%, 2029/08/20	54,918	54,920	55,351
		655,920	661,628

Schedule of Investments (continued)

As at December 31, 2025

Security	Par Value	Average Cost	Fair Value
Mortgage Backed Securities (1.08%)			
NHA MBS CIBC World Markets Inc., 3.24%, 2030/06/01	67,866	67,321	67,916
NHA MBS CIBC World Markets Inc., 3.00%, 2030/09/01	122,900	122,631	121,948
NHA MBS Laurentian Bank of Canada, 3.24%, 2030/07/01	171,733	169,959	171,902
NHA MBS Scotia Capital Inc., 3.80%, 2029/11/01	35,879	35,870	36,531
NHA MBS TD Securities Inc., 3.04%, 2030/02/01	75,844	75,298	75,590
		471,079	473,887
TOTAL CANADIAN FIXED INCOME SECURITIES		42,752,815	43,033,905
U.S. FIXED INCOME SECURITIES (1.01%)			
Corporate Bonds (1.01%)			
Bank of America Corp., Variable Rate, Callable, 3.62%, 2028/03/16	15,000	14,431	15,106
Bank of America Corp., Variable Rate, Callable, 2.60%, 2029/04/04	103,000	94,512	101,661
Goldman Sachs Group Inc. (The), Variable Rate, Callable, 2.01%, 2029/02/28	92,000	82,532	89,816
Manulife Finance Delaware L.P., Variable Rate, Callable, 5.06%, 2041/12/15	120,000	122,964	122,936
Wells Fargo & Co., Variable Rate, Callable, 5.08%, 2028/04/26	107,000	107,015	109,795
		421,454	439,314
TOTAL U.S. FIXED INCOME SECURITIES		421,454	439,314
Transaction Costs		(3)	
TOTAL INVESTMENT PORTFOLIO (99.61%)		\$ 43,174,266	\$ 43,473,219
Cash and cash equivalents (0.09%)			37,246
Other assets less liabilities (0.30%)			132,784
NET ASSETS (100.00%)			\$ 43,643,249

Notes to Financial Statements

For the Years Ended December 31, 2025 and 2024

1. REPORTING ENTITY

Global X Active Canadian Bond ETF (“HAD” or the “ETF”) is an investment trust established under the laws of the Province of Ontario by Declaration of Trust and effectively began operations on October 10, 2012. The address of the ETF’s registered office is: c/o Global X Investments Canada Inc., 55 University Avenue, Suite 800, Toronto, Ontario, M5J 2H7.

The ETF is offered for sale on a continuous basis by its prospectus in Class E units (“Class E”) which trade on the Toronto Stock Exchange (“TSX”) under the symbol HAD. An investor may buy or sell units of the ETF on the TSX only through a registered broker or dealer in the province or territory where the investor resides. Investors are able to trade units of the ETF in the same way as other securities traded on the TSX, including by using market orders and limit orders and may incur customary brokerage commissions when buying or selling units.

The investment objective of HAD is to seek long-term returns primarily through maximized interest income and capital appreciation. HAD invests primarily in a portfolio of Canadian debt (including debt-like securities) denominated in Canadian dollars.

Global X Investments Canada Inc. is the manager, trustee and investment manager of the ETF (“Global X”, the “Manager” or the “Investment Manager”). The Investment Manager is responsible for implementing the ETF’s investment strategies and for engaging the services of Fiera Capital Corporation (“Fiera” or the “Sub-Advisor”), to act as the sub-advisor to the ETF.

2. BASIS OF PREPARATION

(i) Statement of compliance

The financial statements have been prepared in accordance with IFRS Accounting Standards (“IFRS”). Any mention of total net assets, net assets, net asset value or increase (decrease) in net assets is referring to net assets or increase (decrease) in net assets attributable to holders of redeemable units as reported under IFRS.

These financial statements were authorized for issue on March 16, 2026, by the Board of Directors of the Manager.

(ii) Basis of measurement

The financial statements have been prepared on the historical cost basis except for financial instruments at fair value through profit or loss, which are measured at fair value.

(iii) Functional and presentation currency

The financial statements are presented in Canadian dollars, which is the ETF’s functional currency. Functional currency is the currency of the primary economic environment in which the ETF operates. If indicators of the primary economic environment are mixed, then management uses its judgement to determine the functional currency that most faithfully represents the economic effect of the underlying transactions, events and conditions.

3. MATERIAL ACCOUNTING POLICY INFORMATION

The accounting policies set out below have been applied consistently to all periods presented in these financial statements.

Notes to Financial Statements (continued)

For the Years Ended December 31, 2025 and 2024

(a) Financial instruments

(i) Recognition, initial measurement and classification

The ETF is subject to IFRS 9, Financial Instruments (“IFRS 9”) for the classification and measurement requirements for financial instruments, including impairment of financial assets and hedge accounting.

IFRS 9 requires financial assets to be classified based on the ETF’s business model for managing the financial assets and contractual cash flow characteristics of the financial assets. The standard includes three principal classification categories for financial assets: measured at amortized cost, fair value through other comprehensive income, and fair value through profit or loss (“FVTPL”). IFRS 9 requires classification of debt instruments, if any, based solely on payments of principal and interests, and business model tests.

The ETF’s financial assets and financial liabilities are managed and its performance is evaluated on a fair value basis. The contractual cash flows of the ETF’s debt securities, if any, consist solely of principal and interest, however, these securities are neither held in held-to-collect, or held-to-collect-and-sell business models in IFRS 9.

Financial assets and financial liabilities at FVTPL are initially recognized on the trade date, at fair value (see below), with transaction costs recognized in the statement of comprehensive income. Other financial assets and financial liabilities are recognized on the date on which they are originated at fair value.

The ETF classifies financial assets and financial liabilities into the following categories:

- Financial assets classified at FVTPL: debt securities, equity investments and derivative financial instruments
- Financial assets at amortized cost: all other financial assets
- Financial liabilities classified at FVTPL: derivative financial instruments and securities sold short, if any
- Financial liabilities at amortized cost: all other financial liabilities

(ii) Impairment

At each reporting date, financial assets measured at amortized cost are assessed for impairment using the expected-credit-loss model, with any loss allowances recognized in profit or loss. Significant financial difficulties of the counterparty, probability that the counterparty will enter bankruptcy or financial reorganization, and default in payments are all considered indicators that amounts may be credit impaired.

(iii) Fair value measurement

Fair value is the price that would be received to sell an asset or paid to transfer a liability in an orderly transaction between market participants at the measurement date in the principal or, in its absence, the most advantageous market to which the ETF has access at that date. The fair value of a liability reflects its non-performance risk.

Investments are valued at fair value as of the close of business on each day upon which a session of the TSX is held (“Valuation Date”) and based on external pricing sources to the extent possible. Investments held that are traded in an active market through recognized public stock exchanges, over-the-counter markets, or through recognized investment dealers, are valued at their closing sale price. For exchange-traded securities, close prices are considered to be fair value if they fall within the bid-ask spread. In circumstances where the close price is not within the bid-ask spread, the Manager determines the point within the bid-ask spread that is most representative of fair value based on the specific facts and circumstances. However, such prices may be adjusted if a more accurate value can be

Notes to Financial Statements (continued)

For the Years Ended December 31, 2025 and 2024

obtained from recent trading activity or by incorporating other relevant information that may not have been reflected in pricing obtained from external sources. Short-term investments, including notes and money market instruments, are valued at amortized cost which approximates fair value.

Investments held that are not traded in an active market, including some derivative financial instruments, are valued using observable market inputs where possible, on such basis and in such manner as established by the Manager. Derivative financial instruments are recorded in the statement of financial position according to the gain or loss that would be realized if the contracts were closed out on the Valuation Date. Margin deposits, if any, are included in the schedule of investments as margin deposits. See also, the summary of fair value measurements in note 6.

Fair value policies used for financial reporting purposes are the same as those used to measure the net asset value (“NAV”) for transactions with unitholders.

The fair value of other financial assets and liabilities approximates their carrying values due to the short-term nature of these instruments.

(iv) Offsetting

Financial assets and liabilities are offset and the net amount presented in the statement of financial position when there is a legally enforceable right to offset the recognized amounts and there is an intention to settle on a net basis, or to realize the asset and settle the liability simultaneously.

Income and expenses are presented on a net basis for gains and losses from financial instruments at FVTPL and foreign exchange gains and losses.

(v) Specific instruments

Cash and cash equivalents

Cash and cash equivalents consist of cash on deposit and short-term, interest bearing notes with a term to maturity of less than three months from the date of purchase.

As at December 31, 2025, the ETF held cash equivalents of \$nil (2024 – \$nil).

Forward foreign exchange contracts

Forward foreign exchange contracts, if any, are valued at the current market value thereof on the Valuation Date. The value of these forward contracts is the gain or loss that would be realized if, on the Valuation Date, the positions were to be closed out and recorded as derivative assets and/or liabilities in the statement of financial position and as a net change in unrealized appreciation (depreciation) of investments and derivatives in the statement of comprehensive income. When the forward contracts are closed out or mature, realized gains or losses on forward contracts are recognized and are included in the statement of comprehensive income in net realized gain (loss) on sale of investments and derivatives. The Canadian dollar value of forward foreign exchange contracts is determined using forward currency exchange rates supplied by an independent service provider.

Redeemable units

The redeemable units are measured at the redemption amounts and are considered a residual amount of the net assets attributable to holders of redeemable units. They are classified as financial liabilities as a result of the ETF’s requirement to distribute net income and capital gains to unitholders.

Notes to Financial Statements (continued)

For the Years Ended December 31, 2025 and 2024

(b) Investment income

Investment transactions are accounted for as of the trade date. Realized gains and losses from investment transactions are calculated on a weighted average cost basis. The difference between fair value and average cost, as recorded in the financial statements, is included in the statement of comprehensive income as part of the net change in unrealized appreciation (depreciation) of investments and derivatives. Interest income for distribution purposes from investments in bonds and short-term investments represents the coupon interest received by the ETF accounted for on an accrual basis. Dividend income is recognized on the ex-dividend date. Distribution income from investments in other funds or ETFs is recognized when earned.

Income from derivatives is shown in the statement of comprehensive income as net realized gain (loss) on sale of investments and derivatives; net change in unrealized appreciation (depreciation) of investments and derivatives; and, interest income for distribution purposes, in accordance with its nature.

Income from securities lending, if any, is included in “Securities lending income” on the statement of comprehensive income and is recognized when earned. Any securities on loan continue to be displayed in the schedule of investments and the market value of the securities loaned and collateral held is determined daily (see note 7).

If the ETF incurs withholding taxes imposed by certain countries on investment income and capital gains, such income and gains are recorded on a gross basis and the related withholding taxes are shown as a separate expense in the statement of comprehensive income.

(c) Foreign currency

Transactions in foreign currencies are translated into the ETF’s reporting currency using the exchange rate prevailing on the trade date. Monetary assets and liabilities denominated in foreign currencies at the reporting date are translated at the year-end exchange rate. Foreign exchange gains and losses are presented as “Net realized gain (loss) on foreign exchange”, except for those arising from financial instruments at fair value through profit or loss, which are recognized as a component within “Net realized gain (loss) on sale of investments and derivatives” and “Net change in unrealized appreciation (depreciation) of investments and derivatives” in the statement of comprehensive income.

(d) Cost basis

The cost of portfolio investments is determined on an average cost basis.

(e) Increase (decrease) in net assets attributable to holders of redeemable units per unit

The increase (decrease) in net assets per unit in the statement of comprehensive income represents the change in net assets attributable to holders of redeemable units from operations divided by the weighted average number of units of the ETF outstanding during the reporting year.

(f) Unitholder transactions

The value at which units are issued or redeemed is determined by dividing the net asset value of the ETF by the total number of units outstanding of the ETF on the applicable Valuation Date. Amounts received on the issuance of units and amounts paid on the redemption of units are included in the statement of changes in financial position. Orders for subscriptions or redemptions are only permissible on valid trading days, as defined in the ETF’s prospectus.

Notes to Financial Statements (continued)

For the Years Ended December 31, 2025 and 2024

(g) Amounts receivable (payable) relating to portfolio assets sold (purchased)

In accordance with the ETF's policy of trade date accounting for sale and purchase transactions, sales/purchase transactions awaiting settlement represent amounts receivable/payable for securities sold/purchased, but not yet settled as at the reporting date.

(h) Net assets attributable to holders of redeemable units per unit

Net assets attributable to holders of redeemable units per unit is calculated by dividing the ETF's net assets attributable to holders of redeemable units by the number of units of the ETF outstanding on the Valuation Date.

(i) Transaction costs

Transaction costs are incremental costs that are directly attributable to the acquisition, issue or disposal of an investment, which include fees and commissions paid to agents, advisors, brokers and dealers, levies by regulatory agencies and securities exchanges, and any applicable transfer taxes and duties. Transaction costs are expensed and are included in "Transaction costs" in the statement of comprehensive income.

(j) Future changes in accounting policies

IFRS 7 and IFRS 9 will have amendments that will apply for annual reporting periods beginning on or after January 1, 2026. The amendments relate to settling financial liabilities using an electronic payment system and assessing contractual cash flow characteristics of financial assets, including those with Environmental, Social, and Governance linked features. There are additional amended disclosure requirements related to financial instruments with contingent features.

IFRS 18 will replace IAS 1 Presentation of Financial Statements and will apply for annual reporting periods beginning on or after January 1, 2027. IFRS 18 introduces new required categories and subtotals in the statement of comprehensive income and enhances the presentation of management-defined performance measures to be disclosed in a single note. It also requires entities to use the operating profit subtotal as the starting point for the statement of cash flows when presenting operating cash flows under the indirect method. This change will impact the structure of the ETF's statement of comprehensive income, the statement of cash flows and additional required disclosures.

The ETF is in the process of assessing the impact of the amended and new accounting standards to the financial statements.

4. CRITICAL ACCOUNTING ESTIMATES AND JUDGEMENTS

In preparing these financial statements, the Manager has made judgements, estimates and assumptions that affect the application of accounting policies and the reported amounts of assets, liabilities, income and expenses. Actual results may differ from these estimates. Estimates and underlying assumptions are reviewed on an ongoing basis. Revisions to estimates are recognized prospectively.

The ETF may hold financial instruments that are not quoted in active markets, including derivatives. The determination of the fair value of these instruments is the area with the most significant accounting judgements and estimates that the ETF has made in preparing the financial statements. See note 6 for more information on the fair value measurement of the ETF's financial instruments.

Notes to Financial Statements (continued)

For the Years Ended December 31, 2025 and 2024

5. FINANCIAL INSTRUMENTS RISK

In the normal course of business, the ETF's investment activities expose it to a variety of financial risks. The Manager seeks to minimize potential adverse effects of these risks for the ETF's performance by employing professional, experienced portfolio advisors, by daily monitoring of the ETF's positions and market events, and periodically may use derivatives to hedge certain risk exposures. To assist in managing risks, the Manager maintains a governance structure that oversees the ETF's investment activities and monitors compliance with the ETF's stated investment strategies, internal guidelines and securities regulations.

Significant financial instrument risks that are relevant to the ETF, and analysis thereof, are presented below.

(a) Market risk

Market risk is the risk that changes in market prices, such as interest rates, equity prices, foreign exchange rates and credit spreads (not relating to changes in the obligor's/issuer's credit standing) will affect the ETF's income or the fair value of its holdings of financial instruments. The objective of market risk management is to manage and control market risk exposures within acceptable parameters, while optimizing the return.

(i) Currency risk

Currency risk is the risk that financial instruments which are denominated in currencies other than the ETF's reporting currency, the Canadian dollar, will fluctuate due to changes in exchange rates and adversely impact the ETF's income, cash flows or fair values of its investment holdings. The ETF may reduce its foreign currency exposure through the use of derivative arrangements such as foreign exchange forward contracts or futures contracts. As at December 31, 2025 and 2024, the ETF did not have any exposure to foreign currencies.

(ii) Interest rate risk

The ETF may be exposed to the risk that the fair value of future cash flows of its financial instruments will fluctuate as a result of changes in market interest rates. In general, the value of interest-bearing financial instruments will rise if interest rates fall, and conversely, will generally fall if interest rates rise. There is minimal sensitivity to interest rate fluctuation on cash and cash equivalents invested at short-term market rates since those securities are usually held to maturity and are short term in nature.

The following table summarizes the ETF's exposure to interest rate risk, including the ETF's assets categorized by the remaining term to maturity:

Investments	Less than 1 year	1 - 3 years	3 - 5 years	> 5 years	Non-interest bearing	Total
As at	(\$000's)	(\$000's)	(\$000's)	(\$000's)	(\$000's)	(\$000's)
December 31, 2025	–	4,870	8,173	30,727	–	43,770
December 31, 2024	–	4,934	8,028	29,865	–	42,827

The percentage of the ETF's net assets exposed to interest rate risk as at December 31, 2025, was 100.3% (December 31, 2024 – 100.0%). The amount by which the net assets of the ETF would have increased or decreased, as at December 31, 2025, had the prevailing interest rates been lowered or raised by 1%, assuming a parallel shift in the yield curve, with all other variables remaining constant, was \$3,138,344 (December 31, 2024 – \$3,211,894). The ETF's interest rate sensitivity was determined based on portfolio weighted duration. In practice, actual results may differ from this sensitivity analysis.

Notes to Financial Statements (continued)

For the Years Ended December 31, 2025 and 2024

(iii) Other market risk

Other market risk is the risk that the value of financial instruments will fluctuate as a result of changes in market prices (other than those arising from interest rate risk or currency risk), whether caused by factors specific to an individual investment, its issuer, or all factors affecting all instruments traded in a market or market segment. The Manager has implemented internal risk management controls on the ETF which are intended to limit the loss on its trading activities.

The table below shows the estimated impact on the ETF of a 1% increase or decrease in a broad-based market index, based on historical correlation, with all other factors remaining constant, as at the dates shown. In practice, actual results may differ from this sensitivity analysis and the difference could be material. The historical correlation may not be representative of future correlation.

Comparative Index	December 31, 2025	December 31, 2024
ICE BofA Merrill Lynch Canada Broad Market Index	\$407,089	\$399,357

(b) Credit risk

Credit risk on financial instruments is the risk of a financial loss occurring as a result of the default of a counterparty on its obligation to the ETF. It arises principally from debt securities held, and also from derivative financial assets, cash and cash equivalents, and other receivables. The ETF's maximum credit risk exposure as at the reporting date is represented by the respective carrying amounts of the financial assets in the statement of financial position. The ETF's credit risk policy is to minimize its exposure to counterparties with perceived higher risk of default by dealing only with counterparties that meet the credit standards set out in the ETF's prospectus and, when necessary, receiving acceptable collateral.

Analysis of credit quality

The ETF's credit risk exposure by designated rating of the invested portfolio as at December 31, 2025 and 2024, is listed as follows:

Debt or Derivative Securities by Credit Rating	Percentage of Net Asset Value (%)	
	December 31, 2025	December 31, 2024
AAA	37.3%	29.1%
AA	14.2%	26.9%
A	28.1%	24.7%
BBB	19.5%	18.3%
BB	1.1%	1.1%
Total	100.3%	100.1%

Designated ratings are obtained by Standard & Poor's, Moody's and/or Dominion Bond Rating Services. Where more than one rating is obtained for a security, the lowest rating has been used. Credit risk is managed by dealing with counterparties the ETF believes to be creditworthy and by regular monitoring of credit exposures. The maximum exposure to any one debt issuer as of December 31, 2025, was 28.3% (December 31, 2024 – 16.4%) of the net assets of the ETF.

Notes to Financial Statements (continued)

For the Years Ended December 31, 2025 and 2024

(c) Liquidity risk

Liquidity risk is the risk that the ETF will encounter difficulty in meeting the obligations associated with its financial liabilities that are settled by delivering cash or another financial asset. The ETF's policy and the Investment Manager's approach to managing liquidity is to ensure, as far as possible, that it will always have sufficient liquidity to meet its liabilities when due, under both normal and stress conditions, including estimated redemptions of shares, without incurring unacceptable losses or risking damage to the ETF's reputation. Generally, liabilities of the ETF are due within 90 days except for net assets attributable to holders of redeemable units, which are due on demand. Liquidity risk is managed by investing the majority of the ETF's assets in investments that are traded in an active market and can be readily disposed. The ETF aims to retain sufficient cash and cash equivalent positions to maintain liquidity; therefore, the liquidity risk for the ETF is considered minimal.

6. FAIR VALUE MEASUREMENT

Below is a classification of fair value measurements of the ETF's investments based on a three level fair value hierarchy and a reconciliation of transactions and transfers within that hierarchy. The hierarchy of fair valuation inputs is summarized as follows:

- Level 1: securities that are valued based on quoted prices in active markets.
- Level 2: securities that are valued based on inputs other than quoted prices that are observable, either directly as prices, or indirectly as derived from prices.
- Level 3: securities that are valued with significant unobservable market data.

Changes in valuation methods may result in transfers into or out of an investment's assigned level. The following is a summary of the inputs used as at December 31, 2025 and 2024, in valuing the ETF's investments and derivatives carried at fair values:

	December 31, 2025			December 31, 2024		
	Level 1 (\$)	Level 2 (\$)	Level 3 (\$)	Level 1 (\$)	Level 2 (\$)	Level 3 (\$)
Financial Assets						
Bonds	–	42,337,704	–	–	42,331,038	–
Asset-Backed Securities	–	661,628	–	–	171,830	–
Mortgage Backed Securities	–	473,887	–	–	38,381	–
Total Financial Assets	–	43,473,219	–	–	42,541,249	–
Total Financial Liabilities	–	–	–	–	–	–
Net Financial Assets and Liabilities	–	43,473,219	–	–	42,541,249	–

There were no significant transfers made between Levels 1 and 2 as a result of changes in the availability of quoted market prices or observable market inputs during the years shown. In addition, there were no investments or transactions classified in Level 3 for the years ended December 31, 2025 and 2024.

Notes to Financial Statements (continued)

For the Years Ended December 31, 2025 and 2024

7. SECURITIES LENDING

In order to generate additional returns, the ETF is authorized to enter into securities lending agreements with borrowers deemed acceptable in accordance with National Instrument 81-102 – *Investment Funds* (“NI 81-102”). Under a securities lending agreement, the borrower must pay the ETF a negotiated securities lending fee, provide compensation to the ETF equal to any distributions received by the borrower on the securities borrowed, and the ETF must receive an acceptable form of collateral in excess of the value of the securities loaned. Although such collateral is marked to market, the ETF may be exposed to the risk of loss should a borrower default on its obligations to return the borrowed securities and the collateral is insufficient to reconstitute the portfolio of loaned securities. Revenue, if any, earned on securities lending transactions during the year is disclosed in the ETF’s statement of comprehensive income.

The aggregate closing market value of securities loaned and collateral received as at December 31, 2025 and 2024, was as follows:

As at	Securities Loaned	Collateral Received
December 31, 2025	\$1,903,586	\$2,000,656
December 31, 2024	\$2,902,825	\$3,051,735

Collateral may comprise, but is not limited to, cash and obligations of or guaranteed by the Government of Canada or a province thereof; by the United States government or its agencies; by some sovereign states; by permitted supranational agencies; and short-term debt of Canadian financial institutions, if, in each case, the evidence of indebtedness has a designated rating as defined by NI 81-102.

The table below presents a reconciliation of the securities lending income as presented in the statement of comprehensive income for the years ended December 31, 2025 and 2024. It shows the gross amount of securities lending revenues generated from the securities lending transactions of the ETF, less any taxes withheld and amounts earned by parties entitled to receive payments out of the gross amount as part of any securities lending agreements.

For the years ended	December 31, 2025	% of Gross Income	December 31, 2024	% of Gross Income
Gross securities lending income	\$3,279		\$5,769	
Withholding taxes	–	–	(57)	0.99%
Lending Agents’ fees:				
The Bank of New York Mellon	(1,309)	39.92%	(2,282)	39.56%
Net securities lending income paid to the ETF	\$1,970	60.08%	\$3,430	59.45%

8. REDEEMABLE UNITS

The ETF is authorized to issue an unlimited number of redeemable, transferable Class E units each of which represents an equal, undivided interest in the net assets of the ETF. Each unit entitles the owner to one vote at meetings of unitholders. Each unit is entitled to participate equally with all other units with respect to all payments made to unitholders, other than management fee distributions, whether by way of income or capital distributions and, on liquidation, to participate equally in the net assets of the ETF remaining after satisfaction of any outstanding liabilities that are attributable to units of that class of the ETF. All units will be fully paid and non-assessable, with no liability for future assessments, when issued and will not be transferable except by operation of law.

Notes to Financial Statements (continued)

For the Years Ended December 31, 2025 and 2024

The redeemable units issued by the ETF provide an investor with the right to require redemption for cash at a value proportionate to the investor's share in the ETF's net assets at each redemption date. They are classified as liabilities as a result of the ETF's requirement to distribute net income and capital gains to unitholders. The ETF's objectives in managing the redeemable units are to meet the ETF's investment objective, and to manage liquidity risk arising from redemptions. The ETF's management of liquidity risk arising from redeemable units is discussed in note 5.

On any valid trading day, as defined in the ETF's prospectus, unitholders of the ETF may (i) redeem units of the ETF for cash at a redemption price per unit equal to 95% of the closing price for units of the ETF on the TSX on the effective day of the redemption, where the units being redeemed are not equal to a prescribed number of units ("PNU") or a multiple PNU; or (ii) redeem, less any applicable redemption charge as determined by the Manager in its sole discretion from time to time, a PNU or a multiple PNU of the ETF for cash equal to the net asset value of that number of units.

Units of the ETF are issued or redeemed on a daily basis at the net asset value per security that is determined as at 4:00 p.m. (Eastern Time) each business day. Purchase and redemption orders are subject to a 9:30 a.m. (Eastern Time) cut-off time.

The ETF is required to distribute any net income and capital gains that it has earned in the period. Income earned by the ETF is distributed to unitholders at least once per year, if necessary, and these distributions are either paid in cash or reinvested by unitholders into additional units of the ETF. Net realized capital gains, if any, are typically distributed in December of each year to unitholders. The annual capital gains distributions are not paid in cash but rather, are reinvested and reported as taxable distributions and used to increase each unitholder's adjusted cost base for the ETF. Distributions paid to holders of redeemable units are recognized in the statement of changes in financial position.

For the years ended December 31, 2025 and 2024, the number of units issued by subscription and/or distribution reinvestment, the number of units redeemed, the total and average number of units outstanding was as follows:

Year	Beginning Units Outstanding	Units Issued	Units Redeemed	Ending Units Outstanding	Average Units Outstanding
2025	4,704,771	600,521	(475,000)	4,830,292	4,893,949
2024	4,004,084	875,687	(175,000)	4,704,771	4,403,498

9. EXPENSES

Management fees

The Manager provides, or oversees the provision of, administrative services required by the ETF including, but not limited to: negotiating contracts with certain third-party service providers, such as portfolio managers, custodians, registrars, transfer agents, auditors and printers; authorizing the payment of operating expenses incurred on behalf of the ETF; arranging for the maintenance of accounting records for the ETF; preparing reports to unitholders and to the applicable securities regulatory authorities; calculating the amount and determining the frequency of distributions by the ETF; preparing financial statements, income tax returns and financial and accounting information as required by the ETF; ensuring that unitholders are provided with financial statements and other reports as are required from time to time by applicable law; ensuring that the ETF complies with all other regulatory requirements, including the continuous disclosure obligations of the ETF under applicable securities laws; administering purchases, redemptions and other transactions in units of the ETF; and dealing and communicating with unitholders of the ETF. The Manager provides office facilities and personnel to carry out these services, if not otherwise furnished by any other service provider to the ETF. The Manager also monitors the investment strategies of the ETF to ensure that the ETF complies with its investment objectives, investment strategies and investment restrictions and practices.

Notes to Financial Statements (continued)

For the Years Ended December 31, 2025 and 2024

In consideration for the provision of these services, the Manager receives a monthly management fee at the annual rate of 0.30%, plus applicable sales taxes, of the net asset value of the ETF's units, calculated and accrued daily and payable monthly in arrears. The Sub-Advisor is compensated for its services out of the management fees without any further cost to the ETF. Any expenses of the ETF which are waived or absorbed by the Manager are paid out of the management fees received by the Manager.

Other expenses

Unless otherwise waived or reimbursed by the Manager, the ETF pays all of its operating expenses, including but not limited to: audit fees; trustee and custodial expenses; valuation, accounting and record keeping costs; legal expenses; permitted prospectus preparation and filing expenses; costs associated with delivering documents to unitholders; listing and annual stock exchange fees; index licensing fees, if applicable; fees payable to CDS Clearing and Depository Services Inc.; bank related fees and interest charges; extraordinary expenses; unitholder reports and servicing costs; registrar and transfer agent fees; costs associated with the Independent Review Committee; income taxes; sales taxes; brokerage expenses and commissions; withholding taxes; and fees payable to service providers in connection with regulatory compliance and tax matters in foreign jurisdictions.

The Manager, at its discretion, may waive and/or absorb a portion of the fees and/or expenses otherwise payable by the ETF. The waiving and/or absorption of such fees and/or expenses by the Manager may be terminated at any time, or continued indefinitely, at the discretion of the Manager.

10. BROKER COMMISSIONS, SOFT DOLLARS AND RELATED PARTY TRANSACTIONS

Brokerage commissions paid on securities transactions may include amounts paid to related parties of the Manager for brokerage services provided to the ETF.

Research and system usage related services received in return for commissions generated with specific dealers are generally referred to as soft dollars.

Brokerage commissions paid to dealers in connection with investment portfolio transactions, soft dollar transactions incurred and amounts paid to related parties of the Manager, if any, for the years ended December 31, 2025 and 2024, were as follows:

Year Ended	Brokerage Commissions Paid	Soft Dollar Transactions	Amount Paid to Related Parties
December 31, 2025	\$3	\$nil	\$nil
December 31, 2024	\$15	\$nil	\$nil

In addition to the information contained in the table above, the management fees paid to the Manager described in note 9 are related party transactions, as the Manager is considered to be a related party to the ETF. Fees paid to the Independent Review Committee are also considered to be related party transactions. Both the management fees and fees paid to the Independent Review Committee are disclosed in the statement of comprehensive income. The management fees payable by the ETF as at December 31, 2025 and 2024 are disclosed in the statement of financial position.

The ETF may invest in other ETFs managed by the Manager or its affiliates, in accordance with the ETF's investment objectives and strategies. Such investments, if any, are disclosed in the schedule of investments.

Notes to Financial Statements (continued)

For the Years Ended December 31, 2025 and 2024

11. INCOME TAX

The ETF has qualified as a mutual fund trust under the *Income Tax Act* (Canada) (the “Tax Act”) and accordingly, is not taxed on the portion of taxable income that is paid or allocated to unitholders. As a result, the Manager has determined that the ETF is in substance not taxable and therefore does not record income taxes in the statement of comprehensive income nor does it recognize any deferred tax assets or liabilities in the statement of financial position. As well, tax refunds (based on redemptions and realized and unrealized gains during the year) may be available that would make it possible to retain some net capital gains in the ETF without incurring any income taxes.

The ETF may be subject to taxes levied by certain countries on foreign investment income and capital gains. These taxes may be withheld at source or estimated using the most likely method in measuring uncertain tax liabilities in respect of foreign capital gains taxes. Such income and capital gains are recorded on a gross basis with the related foreign withholding tax, or estimate of capital gains taxes, shown as expense in the statement of comprehensive income, and the tax liability amounts included in accrued liabilities in the statement of financial position. The estimate could materially differ from the actual tax payable to the foreign jurisdiction.

As at December 31, 2025 and 2024, the ETF did not have any tax liabilities.

12. TAX LOSSES CARRIED FORWARD

Capital losses for income tax purposes may be carried forward indefinitely and applied against capital gains realized in future years. Non-capital losses carried forward may be applied against future years’ taxable income. Non-capital losses that are realized in the current taxation year may be carried forward for 20 years. As at December 31, 2025, the ETF had capital losses and/or non-capital losses, with the year of expiry of the non-capital losses as follows:

Capital Losses	Non-Capital Losses	Year of Expiry of the Non-Capital Losses
\$7,648,925	–	–

13. OFFSETTING OF FINANCIAL INSTRUMENTS

In the normal course of business, the ETF may enter into various master netting arrangements or other similar agreements that do not meet the criteria for offsetting in the statement of financial position but still allow for the related amounts to be set off in certain circumstances, such as bankruptcy or termination of the contracts. As at December 31, 2025 and 2024, the ETF did not have any financial instruments eligible for offsetting.

14. INTERESTS IN SUBSIDIARIES, ASSOCIATES AND UNCONSOLIDATED STRUCTURED ENTITIES

The ETF may invest in units of other ETFs as part of its investment strategies (“Investee ETF(s)”). The nature and purpose of these Investee ETFs generally, is to manage assets on behalf of third party investors in accordance with their investment objectives, and are financed through the issue of units to investors.

In determining whether the ETF has control or significant influence over an Investee ETF, the ETF assesses voting rights, the exposure to variable returns, and its ability to use the voting rights to affect the amount of the returns. In instances where the ETF has control or has significant influence over an Investee ETF, the ETF qualifies as an investment entity under IFRS 10 - *Consolidated Financial Statements*, and therefore accounts for investments it controls or has significant influence at fair value through profit and loss. The ETF’s primary purpose is defined by its investment objectives and uses the investment strategies available to it as defined in the ETF’s prospectus to meet those objectives. The ETF also measures and evaluates the performance of any Investee ETFs on a fair value basis.

Notes to Financial Statements (continued)

For the Years Ended December 31, 2025 and 2024

Investee ETFs over which the ETF has control or significant influence are categorized as subsidiaries and associates, respectively. All other Investee ETFs are categorized as unconsolidated structured entities. Investee ETFs may be managed by the Manager, its affiliates, or by third-party managers. The ETF does not provide financial support to its unconsolidated structured entities or subsidiaries and has no intention of providing financial or other support.

Investments in Investee ETFs are susceptible to market price risk arising from uncertainty about future values of those Investee ETFs. The maximum exposure to loss from interests in Investee ETFs is equal to the total fair value of the investment in those respective Investee ETFs at any given point in time. The fair value of Investee ETFs, if any, are disclosed in investments in the statement of financial position and listed in the schedule of investments. As at December 31, 2025 and 2024, the ETF had no exposure to subsidiaries, associates or unconsolidated structured entities.

—
GLOBAL X INVESTMENTS CANADA INC.
55 UNIVERSITY AVENUE, SUITE 800 |
TORONTO, ON M5J 2H7

—
1-866-641-5739 OR
(416) 933-5745
INFO@GLOBALX.CA

GLOBAL X
by Mirae Asset